

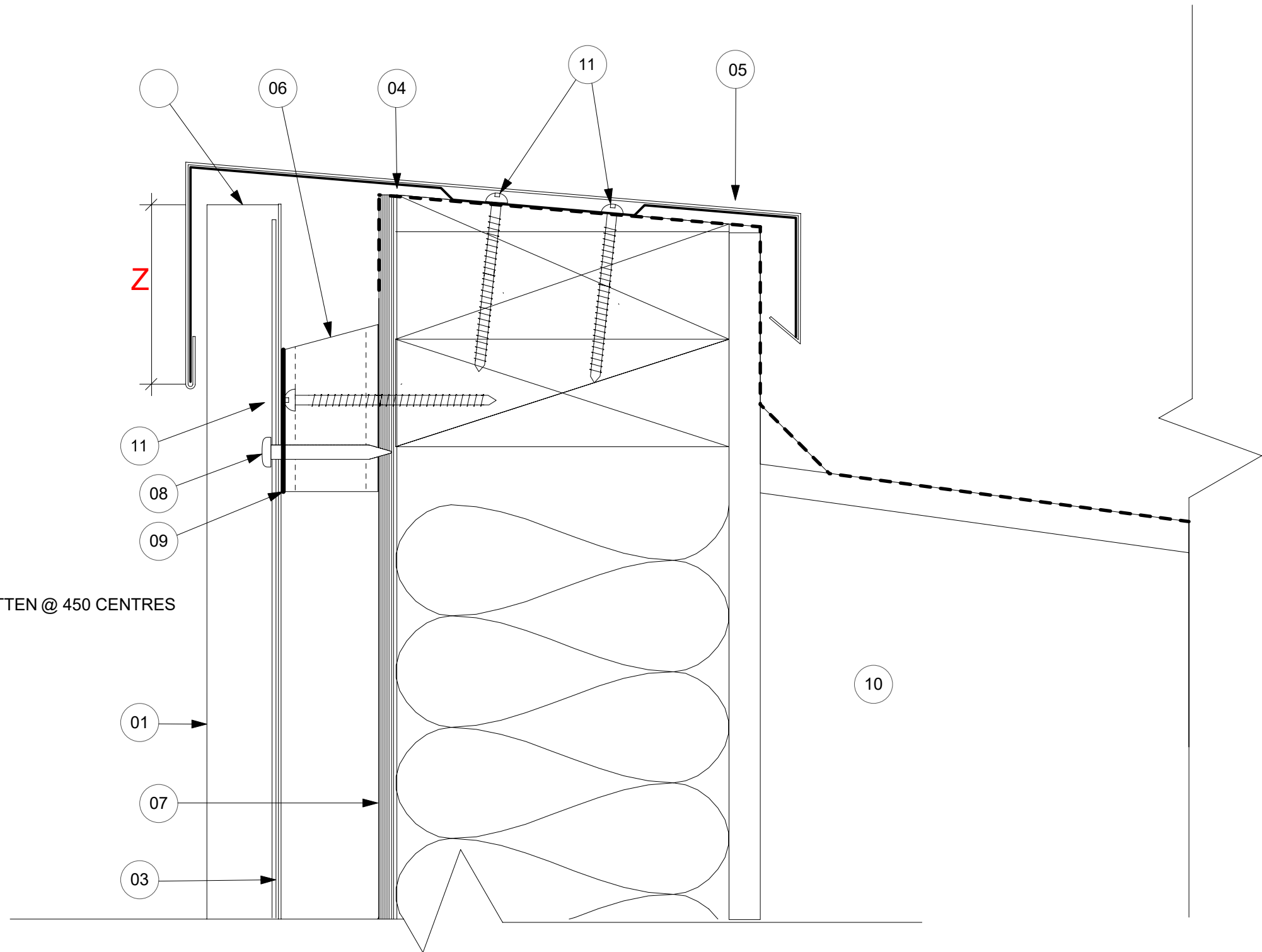
QBT450™

DETAIL DRAWINGS - WALL CLADDING DRAWING INDEX

Wall Cladding, Parapet Capping, Indirect Fixed Option	A-W01
Wall Cladding, Typical Window Head Detail	A-W02
Wall Cladding, Typical Window Head Detail (Recessed Window)	A-W02 (RECESSED)
Wall Cladding, Typical Window Sill Detail	A-W03
Wall Cladding, Typical Window Sill Detail (Recessed Window)	A-W03 (RECESSED)
Wall Cladding, Typical Window Jam Detail	A-W04
Wall Cladding, Typical Window Jam Detail (Recessed Window)	A-W04 (RECESSED)
Wall Cladding, Typical Detail at Groundlevel	A-W05

- 01 QBT 450™ TRAY
- 02 UPSTAND TO QBT 450 TRAY
- 03 QBT 450™ CONTINUOUS ALUMINIUM EXTRUSION
- 04 GRAB FLASHING
- 05 PRE-MANUFACTURED PARAPET CAPPING
- 06 45 X 70 mm H3.2 TREATED CASTELLATED TIMBER BATTEN @ 450 CENTRES
- 07 RAB BOARD
- 08 10-GAUGE STAINLESS STEEL PAN HEAD 50MM, OR 2.8 X 50 mm FLAT HEAD R-DRIVE GALV NAILS
- 09 SEPARATION LAYER
- 10 ROOF STRUCTURE
- 11 10-GAUGE by 100mm PURLIN AND BATTEN SCREW

REFERTO SECTION 10 , TABLE 10 .12 NZS 3604:2011



Z = please refer to E2/AS1 Table 7 for cover widths
length recommended 90 mm to suit Extra High wind zone



www.qbt450.nz

QUICK BATTEN TRAY SYSTEM - QBT 450™

WALL CLADDING, PARAPET CAPPING, INDIRECT FIXED OPTION

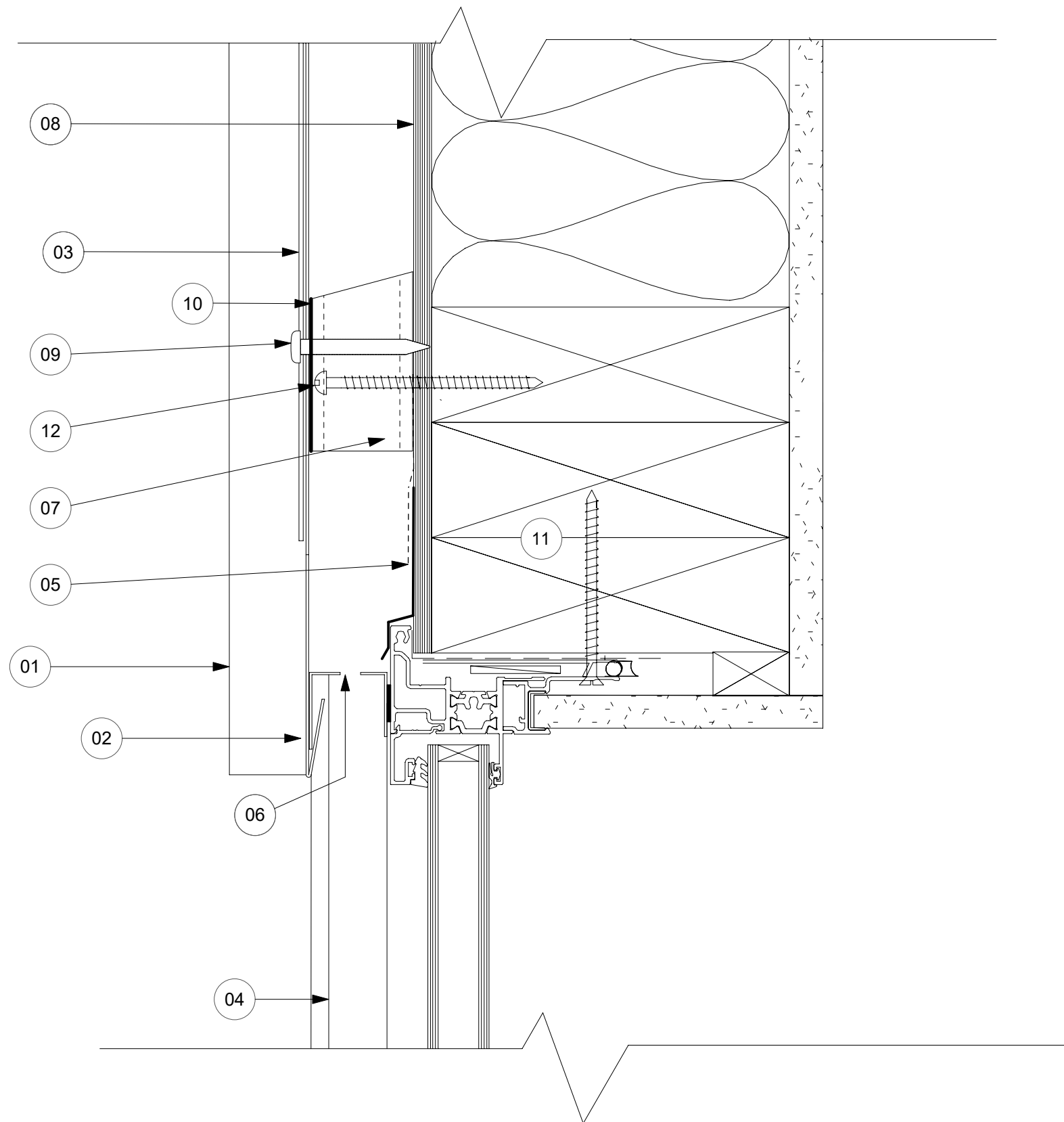
COPYRIGHT RESERVED NO REPRODUCTION OR COPY WITHOUT WRITTEN CONSENT FROM CONSTRUCTION CONNECTION AND CONSULTANCY LTD

Date: 01.06.2020

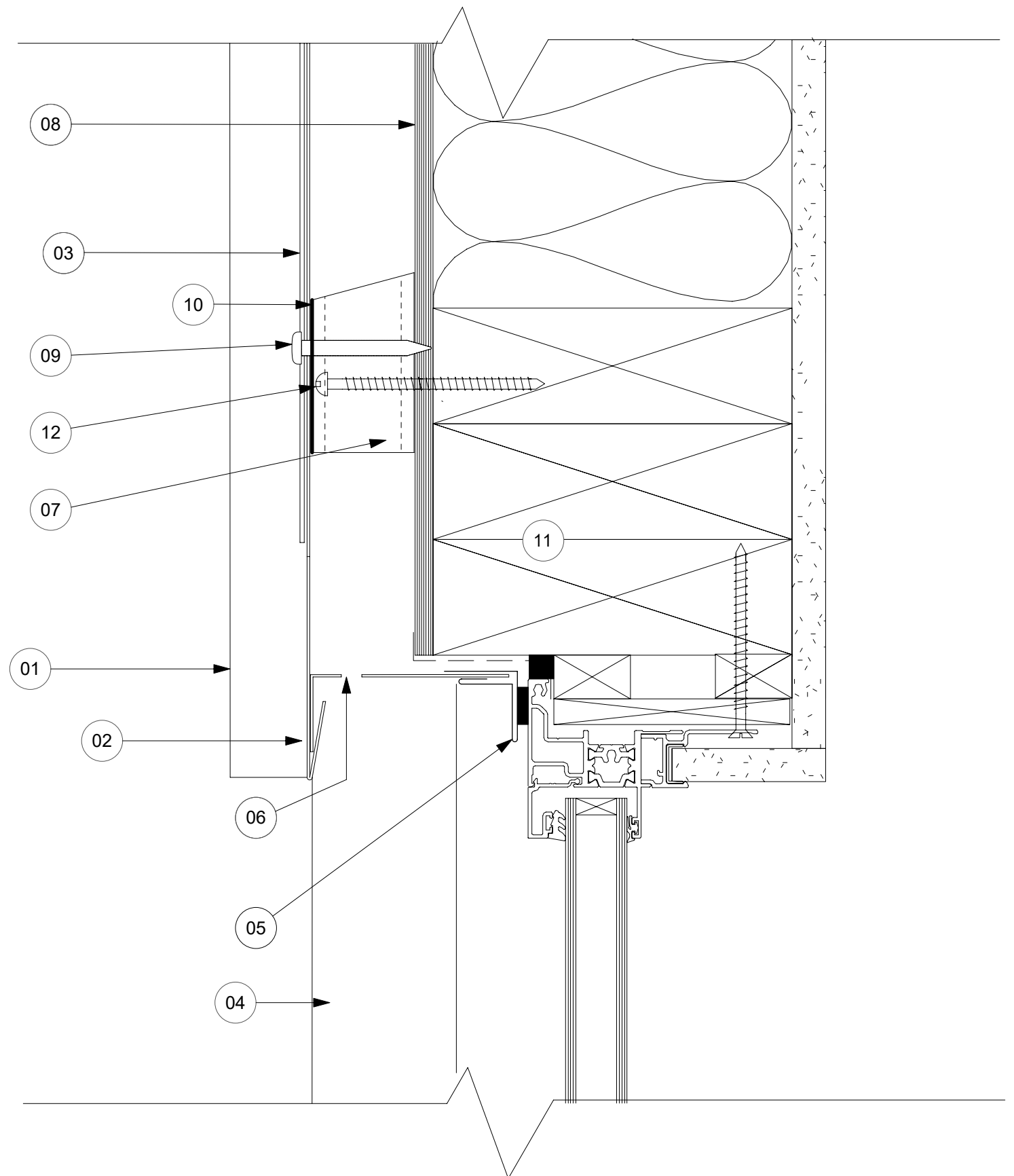
Scale: 1:2 on A3

REV: 01 A-W01

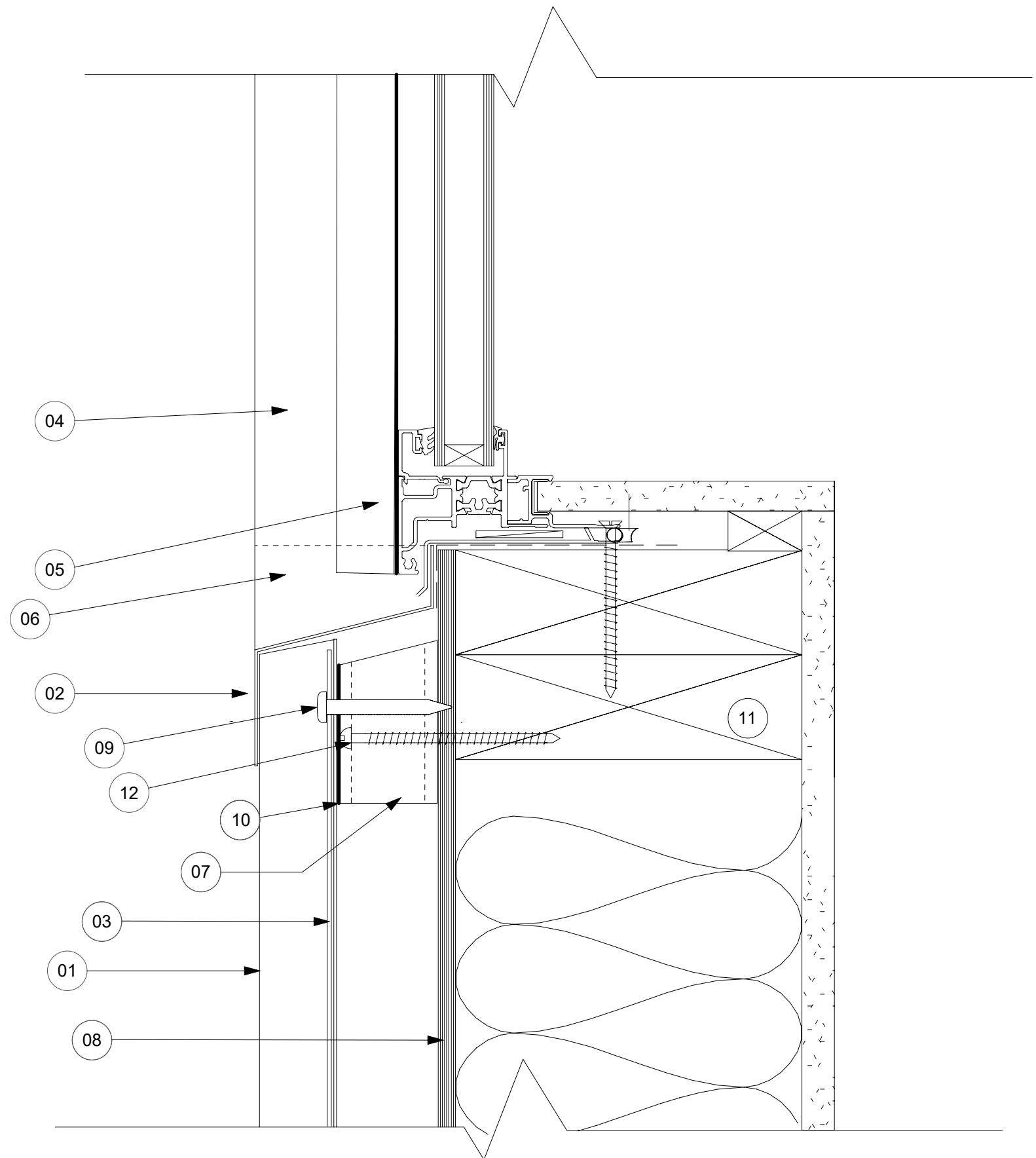
- 01 QBT 450™ TRAY
 - 02 TERMINATION TO QBT 450 TRAY
 - 03 QBT 450™ CONTINUOUS ALUMINIUM EXTRUSION
 - 04 WINDOW JAMB FLASHING
 - 05 WINDOW HEAD FLASHING WITH FLASHING TAPE TO RAB BOARD
 - 06 CAVITY CLOSURE FLASHING WITH 5MM HOLES @ 25mm CETRES
 - 07 45 X 70 mm H3.2 TREATED CASTELLATED TIMBER BATTEN @ 450 CENTRES
 - 08 RAB BOARD
 - 09 10-GAUGE STAINLESS STEEL PAN HEAD 50MM, OR 2.8 X 50 mm FLAT HEAD R-DRIVE GALV NAILS
 - 10 SEPARATION LAYER
 - 11 STRUCTURE
 - 12 10-GAUGE by 100mm PURLIN AND BATTEN SCREW
- REFERTO SECTION 10 , TABLE 10 .12 NZS 3604:2011



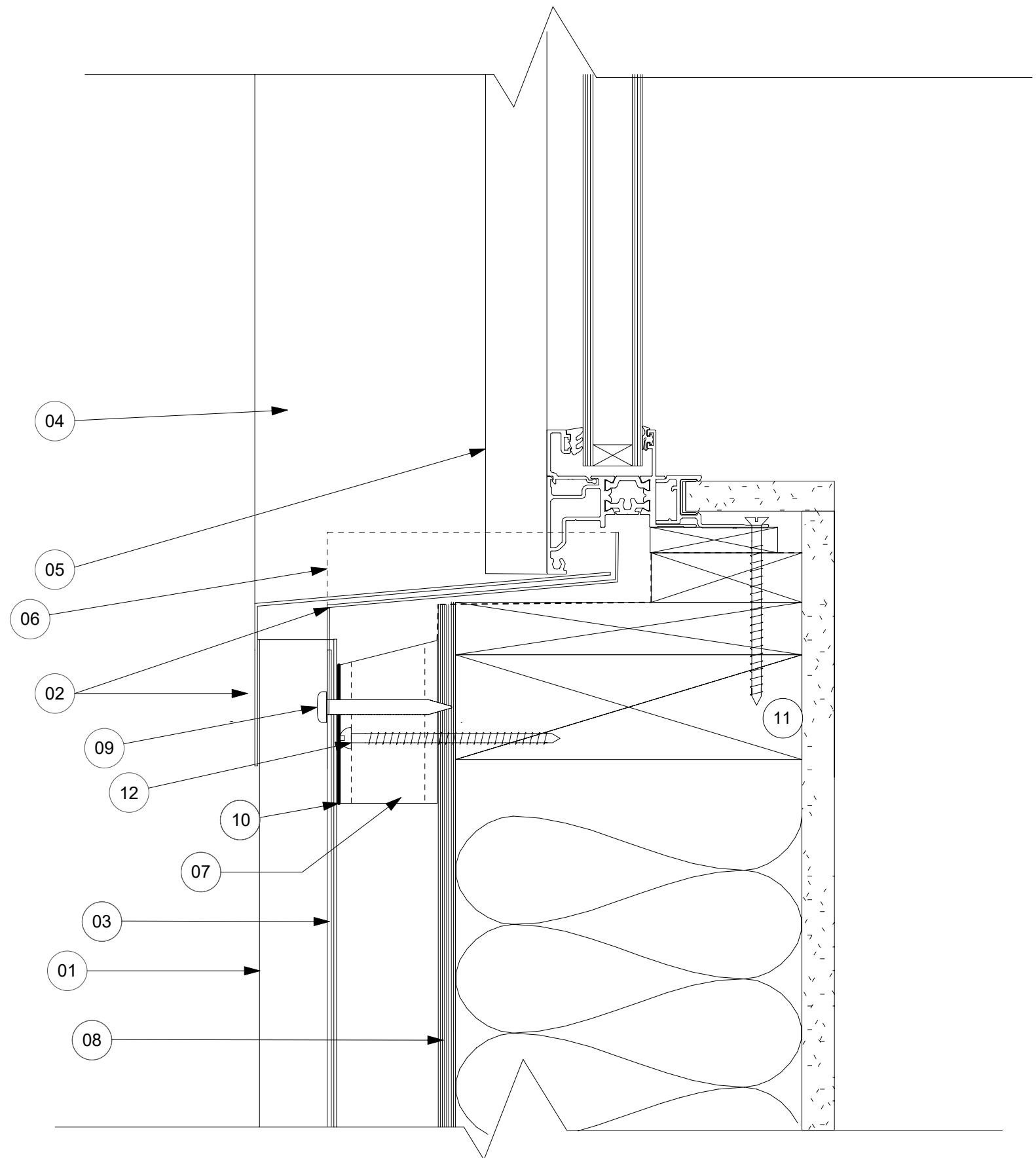
- 01 QBT 450™ TRAY
 - 02 TERMINATION TO QBT 450 TRAY
 - 03 QBT 450™ CONTINUOUS ALUMINIUM EXTRUSION
 - 04 WINDOW JAMB FLASHING
 - 05 WINDOW HEAD GRAB FLASHING
 - 06 WINDOW HEAD FLASHING WITH 5MM HOLES @ 25mm CETRES
 - 07 45 X 70 mm H3.2 TREATED CASTELLATED TIMBER BATTEN @ 450 CENTRES
 - 08 RAB BOARD
 - 09 10-GAUGE STAINLESS STEEL PAN HEAD 50MM, OR 2.8 X 50 mm FLAT HEAD R-DRIVE GALV NAILS
 - 10 SEPARATION LAYER
 - 11 STRUCTURE
 - 12 10-GAUGE by 100mm PURLIN AND BATTEN SCREW
- REFERTO SECTION 10 , TABLE 10 .12 NZS 3604:2011



- 01 QBT 450™ TRAY
 - 02 WINDOW SILL FLASHING
 - 03 QBT 450™ CONTINUOUS ALUMINIUM EXTRUSION
 - 04 WINDOW JAMB FLASHING
 - 05 WINDOW JAMB GRAB FLASHING
 - 06 UPSTAND TO WINDOW SILL FLASHING
 - 07 45 X 70 mm H3.2 TREATED CASTELLATED TIMBER BATTEN @ 450 CENTRES
 - 08 RAB BOARD
 - 09 10-GAUGE STAINLESS STEEL PAN HEAD 50MM, OR 2.8 X 50 mm FLAT HEAD R-DRIVE GALV NAILS
 - 10 SEPARATION LAYER
 - 11 STRUCTURE
 - 12 10-GAUGE by 100mm PURLIN AND BATTEN SCREW
- REFERTO SECTION 10 , TABLE 10 .12 NZS 3604:2011

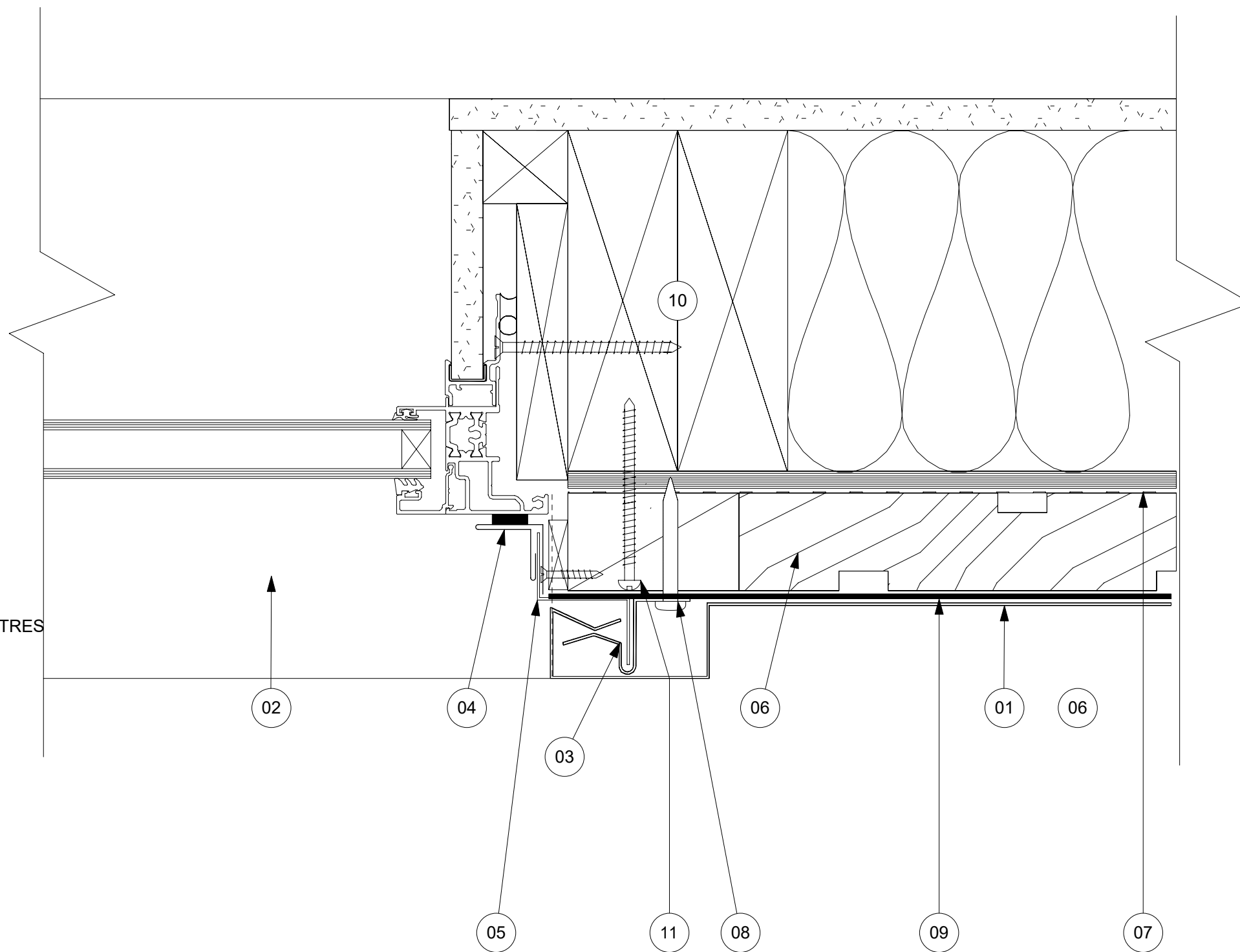


- 01 QBT 450™ TRAY
- 02 TWO PART WINDOW SILL FLASHING
- 03 QBT 450™ CONTINUOUS ALUMINIUM EXTRUSION
- 04 WINDOW JAMB FLASHING
- 05 WINDOW JAMB GRAB FLASHING
- 06 UPSTAND TO WINDOW SILL FLASHING
- 07 45 X 70 mm H3.2 TREATED CASTELLATED TIMBER BATTEN @ 450 CENTRES
- 08 RAB BOARD
10-GAUGE STAINLESS STEEL PAN HEAD
- 09 50MM, OR 2.8 X 50 mm FLAT HEAD R-DRIVE GALV NAILS
- 10 SEPARATION LAYER
- 11 STRUCTURE
- 12 10-GAUGE by 100mm PURLIN AND BATTEN SCREW
REFERTO SECTION 10 , TABLE 10 .12 NZS 3604:2011



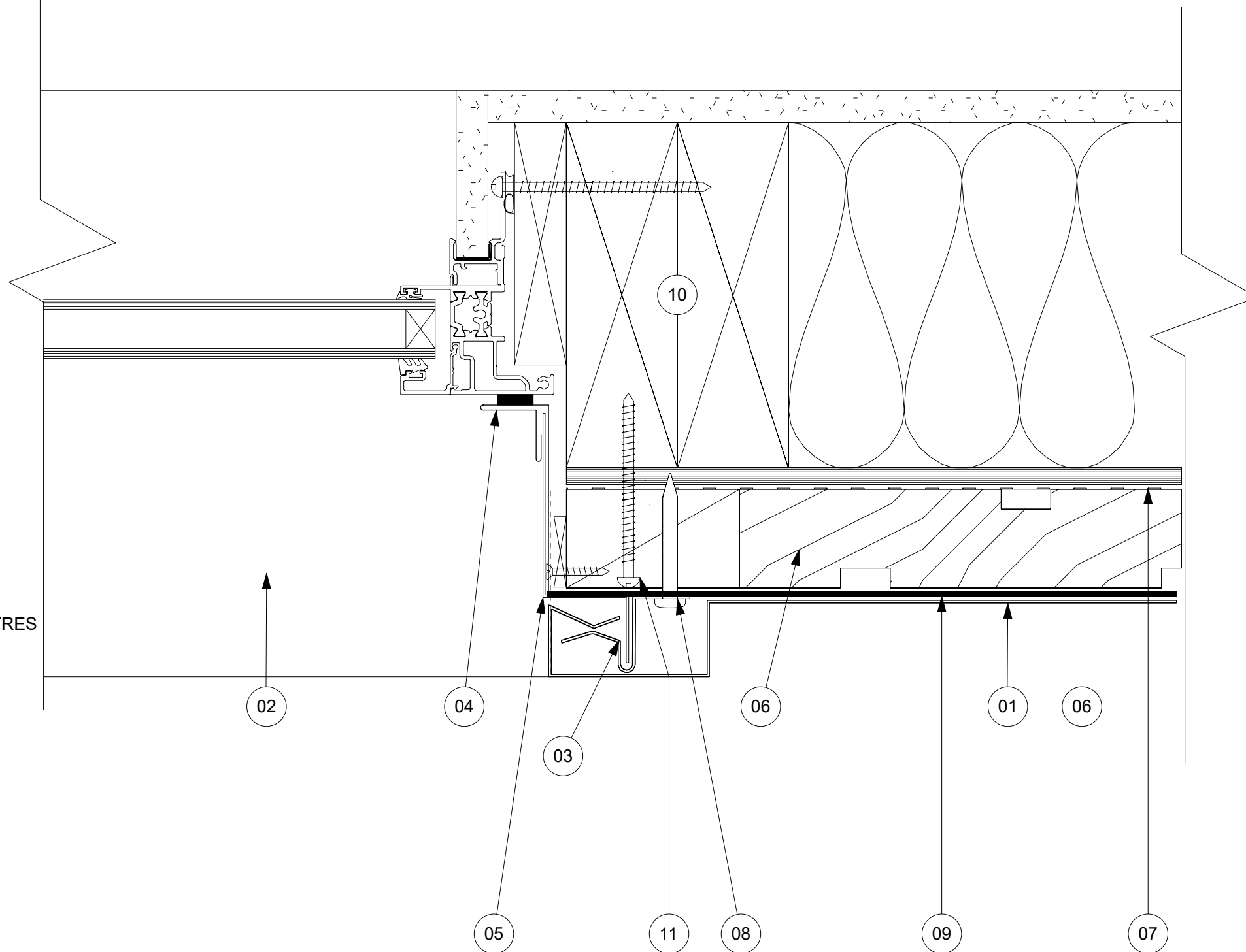
- 01 QBT 450™ TRAY
- 02 WINDOW SILL FLASHING
- 03 QBT 450™ CONTINUOUS ALUMINIUM EXTRUSION
- 04 JAMB GRAB FLASHING
- 05 JAMB FLASHING
- 06 45 X 70 mm H3.2 TREATED CASTELLATED TIMBER BATTEN @ 450 CENTRES
- 07 RAB BOARD
- 08 10-GAUGE STAINLESS STEEL PAN HEAD 50MM, OR 2.8 X 50 mm FLAT HEAD R-DRIVE GALV NAILS
- 09 SEPARATION LAYER
- 10 STRUCTURE
- 11 10-GAUGE by 100mm PURLIN AND BATTEN SCREW

REFERTO SECTION10 , TABLE 10 .12 NZS 3804:2011

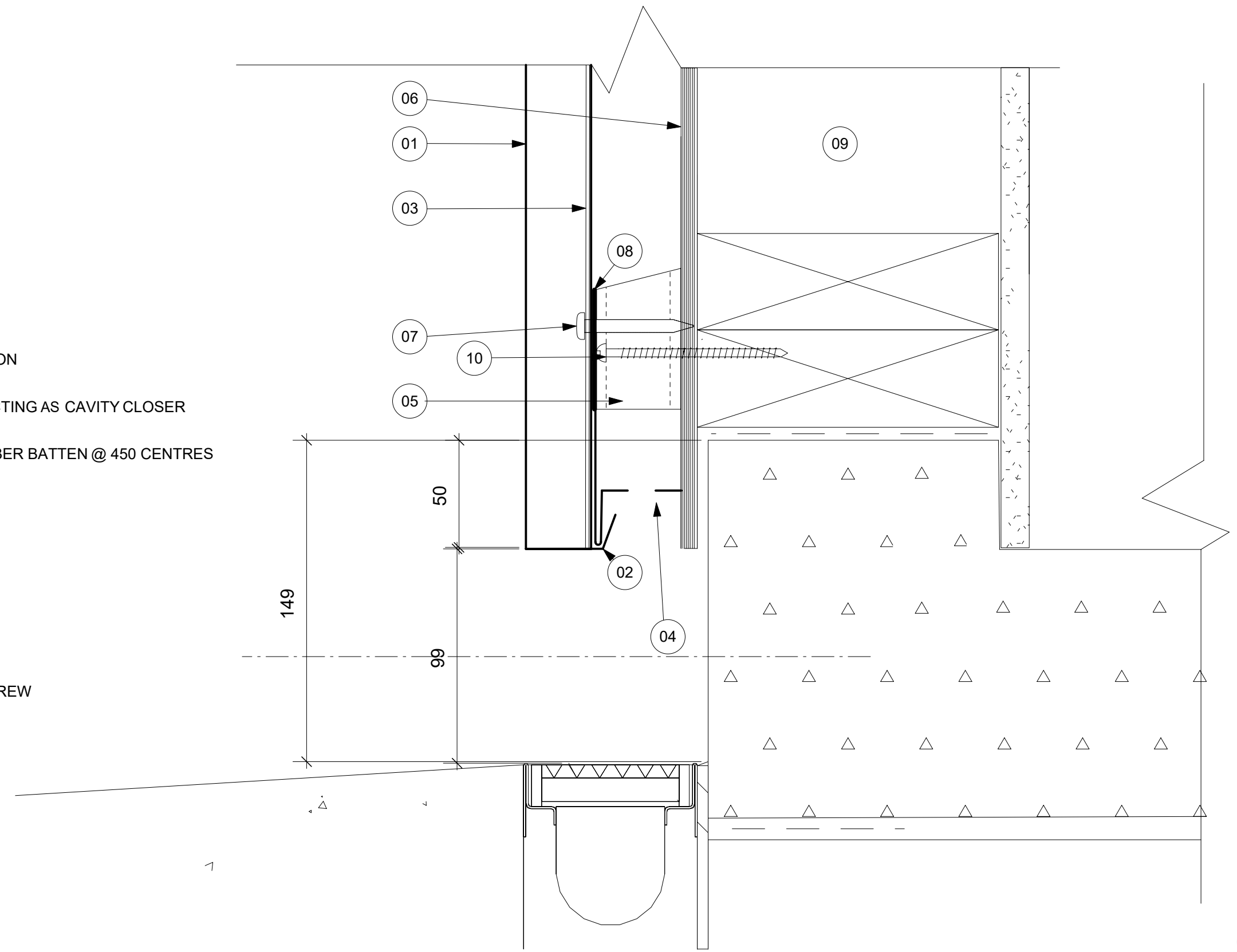


- 01 QBT 450™ TRAY
- 02 WINDOW SILL FLASHING
- 03 QBT 450™ CONTINUOUS ALUMINIUM EXTRUSION
- 04 JAMB GRAB FLASHING
- 05 JAMB FLASHING
- 06 45 X 70 mm H3.2 TREATED CASTELLATED TIMBER BATTEN @ 450 CENTRES
- 07 RAB BOARD
- 08 10-GAUGE STAINLESS STEEL PAN HEAD 50MM, OR 2.8 X 50 mm FLAT HEAD R-DRIVE GALV NAILS
- 09 SEPARATION LAYER
- 10 STRUCTURE
- 11 10-GAUGE by 100mm PURLIN AND BATTEN SCREW

REFERTO SECTION10 , TABLE 10 .12 NZS 3804:2011



- 01 QBT 450™ TRAY
- 02 UPSTAND TO QBT 450 TRAY
- 03 QBT 450™ CONTINUOUS ALUMINIUM EXTRUSION
- 04 PRE-MANUFACTURED STARTER FLASHING ACTING AS CAVITY CLOSER
- 05 45 X 70 mm H3.2 TREATED CASTELLATED TIMBER BATTEN @ 450 CENTRES
- 06 RAB BOARD
- 07 10-GAUGE STAINLESS STEEL PAN HEAD 50MM, OR 2.8 X 50 mm FLAT HEAD R-DRIVE GALV NAILS
- 08 SEPARATION LAYER
- 09 STRUCTURE
- 10 10-GAUGE by 100mm PURLIN AND BATTEN SCREW
REFERTO SECTION10 , TABLE 10 .12 NZS 3604:2011



www.qbt450.nz

QUICK BATTEN TRAY SYSTEM - QBT 450™	Date: 01.06.2020
WALL CLADDING, TYPICAL DETAIL AT GROUNDLEVEL	Scale: 1:2 on A3
COPYRIGHT RESERVED NO REPRODUCTION OR COPY WITHOUT WRITTEN CONSENT FROM CONSTRUCTION CONNECTION AND CONSULTANCY LTD	REV: 01 A-W05