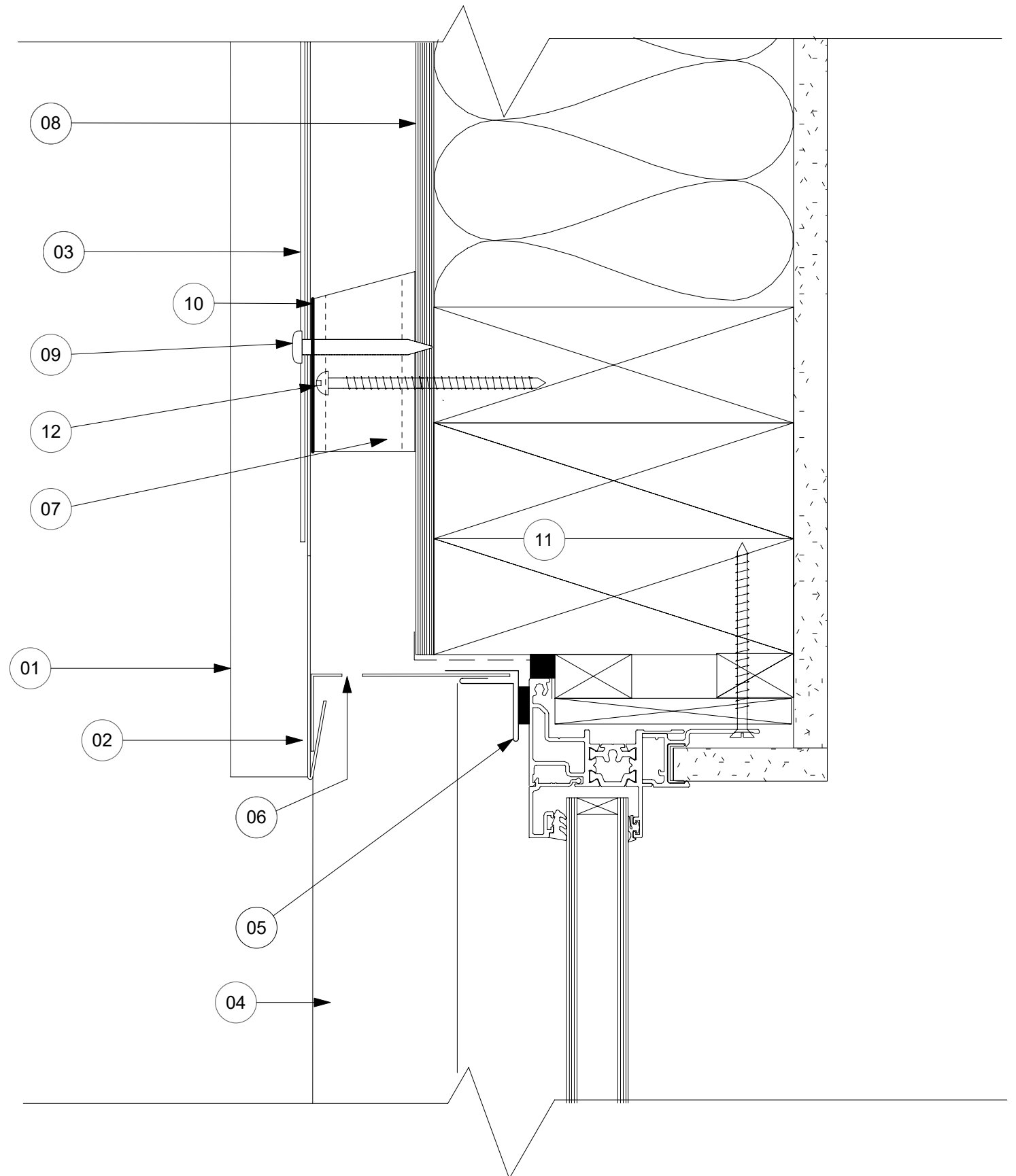


- 01 QBT 450™ TRAY
 - 02 TERMINATION TO QBT 450 TRAY
 - 03 QBT 450™ CONTINUOUS ALUMINIUM EXTRUSION
 - 04 WINDOW JAMB FLASHING
 - 05 WINDOW HEAD GRAB FLASHING
 - 06 WINDOW HEAD FLASHING WITH 5MM HOLES @ 25mm CETRES
 - 07 45 X 70 mm H3.2 TREATED CASTELLATED TIMBER BATTEN @ 450 CENTRES
 - 08 RAB BOARD
 - 09 10-GAUGE STAINLESS STEEL PAN HEAD 50MM, OR 2.8 X 50 mm FLAT HEAD R-DRIVE GALV NAILS
 - 10 SEPARATION LAYER
 - 11 STRUCTURE
 - 12 10-GAUGE by 100mm PURLIN AND BATTEN SCREW
- REFERTO SECTION 10 , TABLE 10 .12 NZS 3604:2011



QBT 450™
THE INNOVATIVE ROOF SYSTEM



www.qbt450.nz

QUICK BATTEN TRAY SYSTEM - QBT 450™

WALL CLADDING, TYPICAL WINDOW HEAD DETAIL (RECESSED WINDOW)

COPYRIGHT RESERVED NO REPRODUCTION OR COPY WITHOUT WRITTEN CONSENT FROM CONSTRUCTION CONNECTION AND CONSULTANCY LTD

Date: 01.06.2020

Scale: 1:2 on A3

REV: 01

