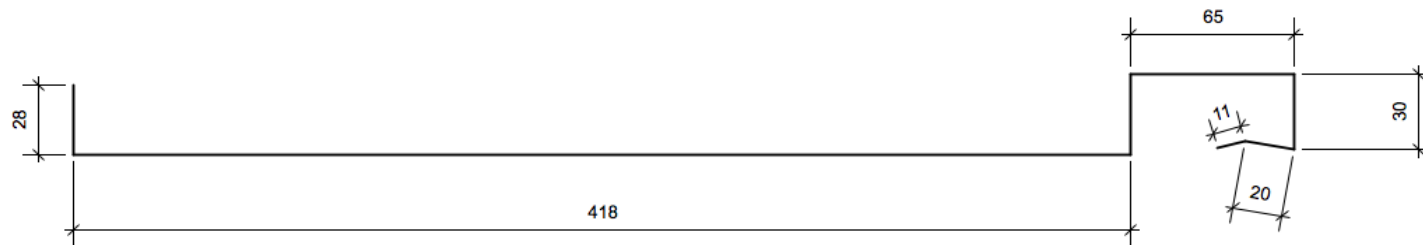


QBT450™

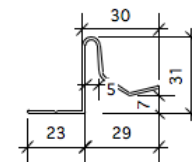
DETAIL DRAWINGS

DRAWING INDEX

PROFILE SECTION	A-01
TYPICAL DETAIL ROOF BUILD-UP	A-02
RIDGE CAPPING DETAIL, DIRECT FIXED	A-03
RIDGE CAPPING DETAIL, INDIRECT FIXED, VENTED	A-04
RIDGE CAPPING DETAIL, MONO PITCHED, DIRECT FIXED	A-05
RIDGE CAPPING DETAIL, MONO PITCHED, INDIRECT FIXED	A-06
BARGE DETAIL, DIRECT FIXED	A-07
BARGE DETAIL, INDIRECT FIXED	A-08
INTERNAL VALLEY GUTTER DETAIL	A-09
EAVE TERMINATION, SOFFIT, WITH QUARTER ROUND GUTTER	A-10
EAVE TERMINATION, WALL, WITH QUARTER ROUND GUTTER	A-11
APRON DETAIL, ROOF WALL JUNCTION DIRECT FIXED	A-12
APRON DETAIL, ROOF WALL JUNCTION, INDIRECT FIXED	A-13
APRON ROOF/ WALL JUNCTION DIRECT FIXED	A-14
APRON ROOF/WALL JUNCTION INDIRECT FIXED	A-15
INTERNAL GUTTER DETAIL	A-16



PROPRIETARY CONTINUOUS EXTRUDED ALUMINIUM RETAINER



NOTE: FOR MATERIAL SELECTION AND THICKNESS, PLEASE REFER TO QBT 450 SPECIFICATION TABLE 1



QBT 450™
THE INNOVATIVE ROOF SYSTEM



www.qbt450.nz

QUICK BATTEN TRAY SYSTEM - QBT 450™

PROFILE SECTION

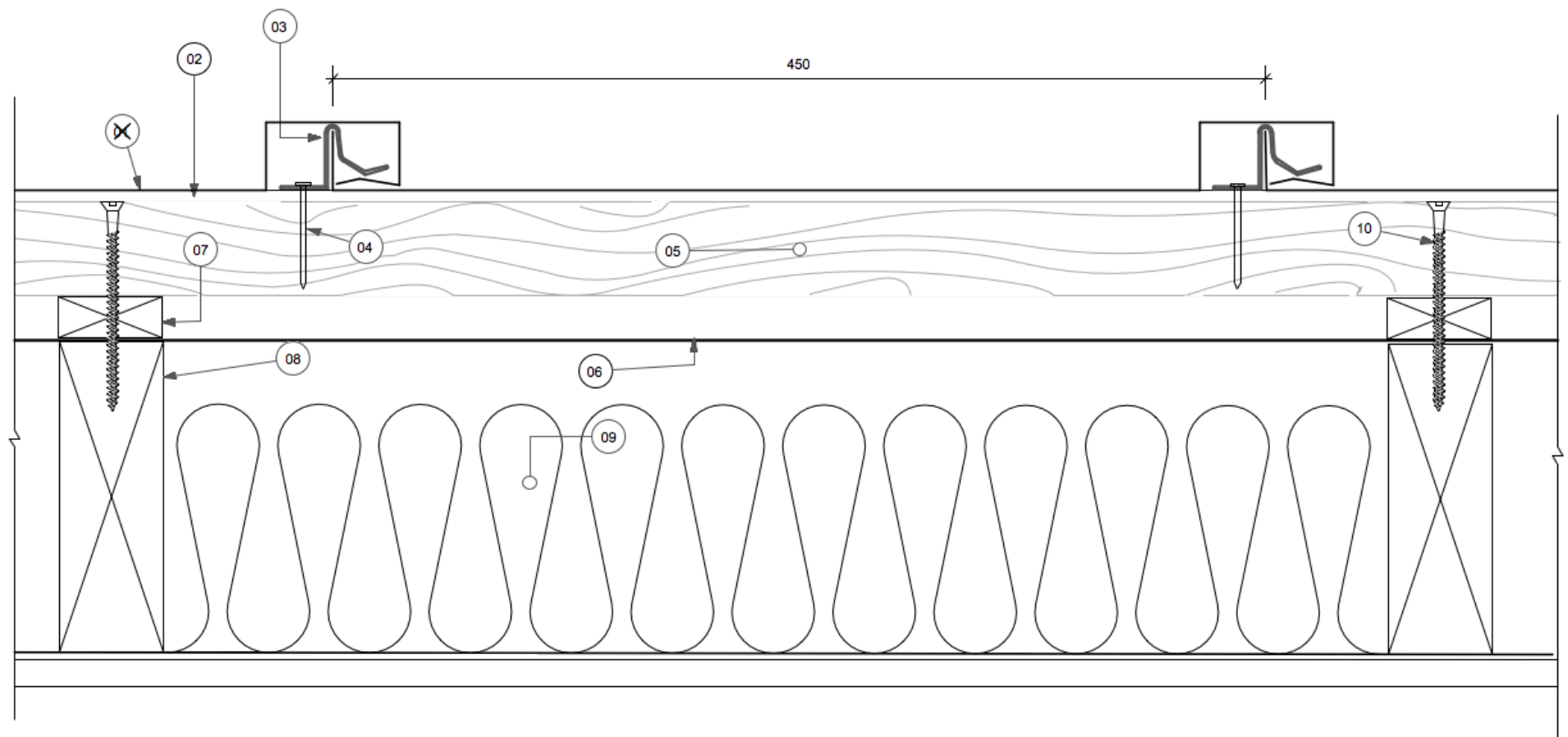
COPYRIGHT RESERVED NO REPRODUCTION OR COPY WITHOUT WRITTEN CONSENT FROM CONSTRUCTION CONNECTION AND CONSULTANCY LTD

Date: 20.05.2020

Scale: 1:2 on A3

REV: 01

A-01



- 01 QBT 450™ ROOF TRAY
 - 02 AIR-Z 3D WOVEN MESH
 - 03 QBT 450™ CONTINUOUS ALUMINIUM EXTRUSION
 - 04 10-GAUGE STAINLESS STEEL PAN HEAD 50MM, OR 2.8 X 50 mm FLAT HEAD R-DRIVE GALV NAILS
 - 05 45 X 70 mm H3.2 TREATED TIMBER BATTEN @ 450 CENTRES
 - 06 VAPOUR PERMABLE ROOF UNDERLAY
 - 07 20 X 50 mm H3.2 TREATED CAVITY BATTEN
 - 08 ROOF STRUCTURE *
 - 09 INSULATION *
 - 10 10-GAUGE by 100mm purlin and batten screw
REFER TO SECTION 10, TABLE 10.1.2 NZS 3604:2011
- * PLEASE CHECK WITH STRUCTURAL ENGINEER FOR LOCAL REQUIREMENTS



QBT 450™
THE INNOVATIVE ROOF SYSTEM



www.qbt450.nz

QUICK BATTEN TRAY SYSTEM - QBT 450™

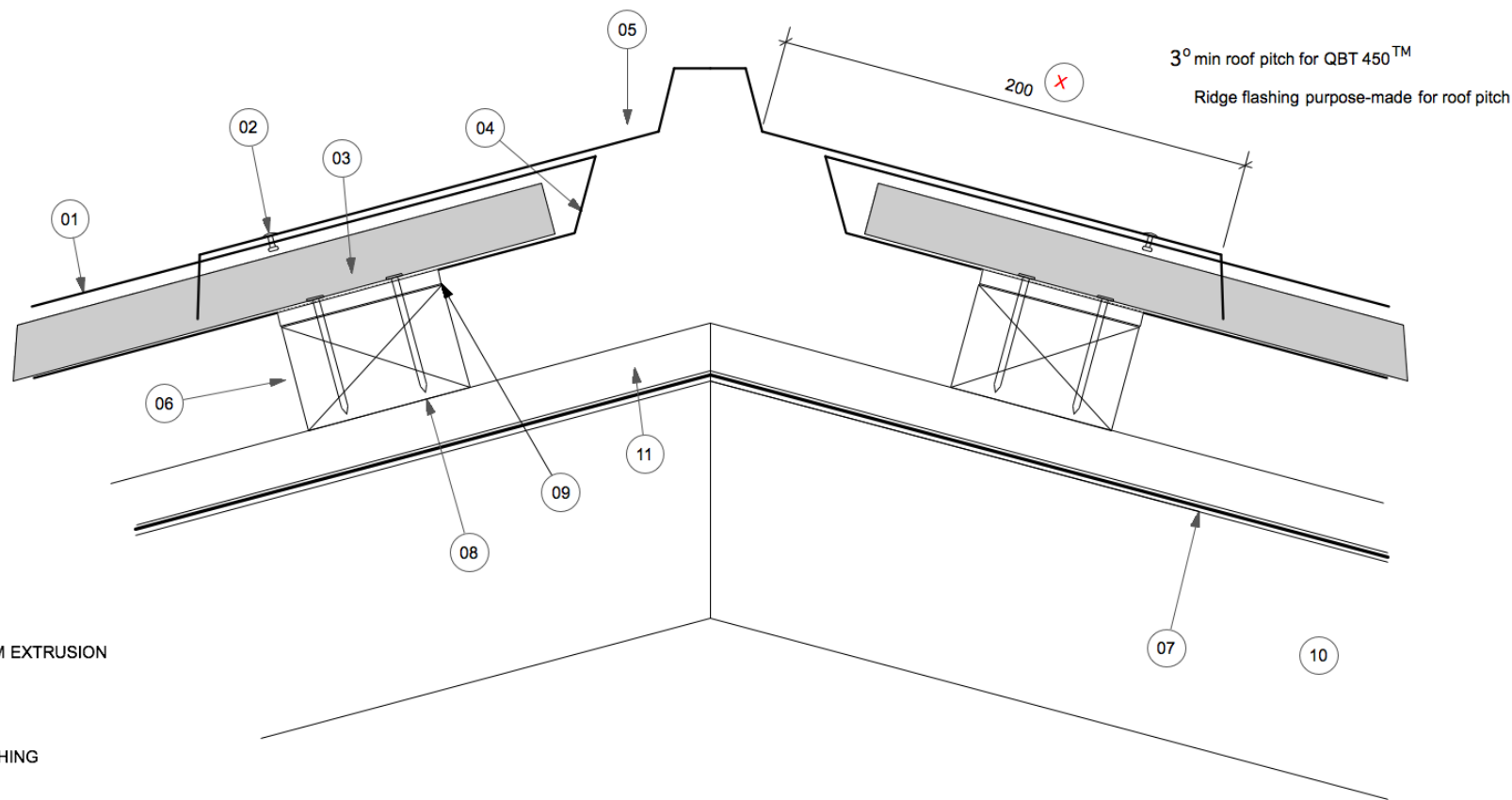
TYPICAL DETAIL FOR ROOF BUILD-UP

COPYRIGHT RESERVED NO REPRODUCTION OR COPY WITHOUT WRITTEN CONSENT FROM CONSTRUCTION CONNECTION AND CONSULTANCY LTD

Date: 20.05.2020

Scale: 1:2 on A3

REV: 01 **A-02**



- 01 QBT 450™ ROOF TRAY
- 02 SEALED RIVET
- 03 QBT 450™ CONTINUOUS ALUMINIUM EXTRUSION
- 04 UPSTAND TO ROOFTRAY
- 05 PRE-MANUFACTURED RIDGE FLASHING
- 06 45 X 70 mm H3.2 TREATED TIMBER BATTEN @ 450 CENTRES
- 07 VAPOUR PERMABLE ROOF UNDERLAY
- 08 10-GAUGE STAINLESS STEEL PAN HEAD
50MM, OR 2.8 X 50 mm FLAT HEAD R-DRIVE
GALV NAILS
- 09 AIR-Z 3-D WOVEN MESH
- 10 ROOF STRUCTURE
- 11 20 X 50 mm H3.2 TREATED CAVITY BATTEN

X = please refer to E2/AS1 - Table 7 for cover widths
recommended 200mm to suit Very High and Extra High wind zone



QBT 450™
THE INNOVATIVE ROOF SYSTEM



www.qbt450.nz

QUICK BATTEN TRAY SYSTEM - QBT 450™

RIDGE CAPPING DETAIL, DIRECT FIXING OPTION

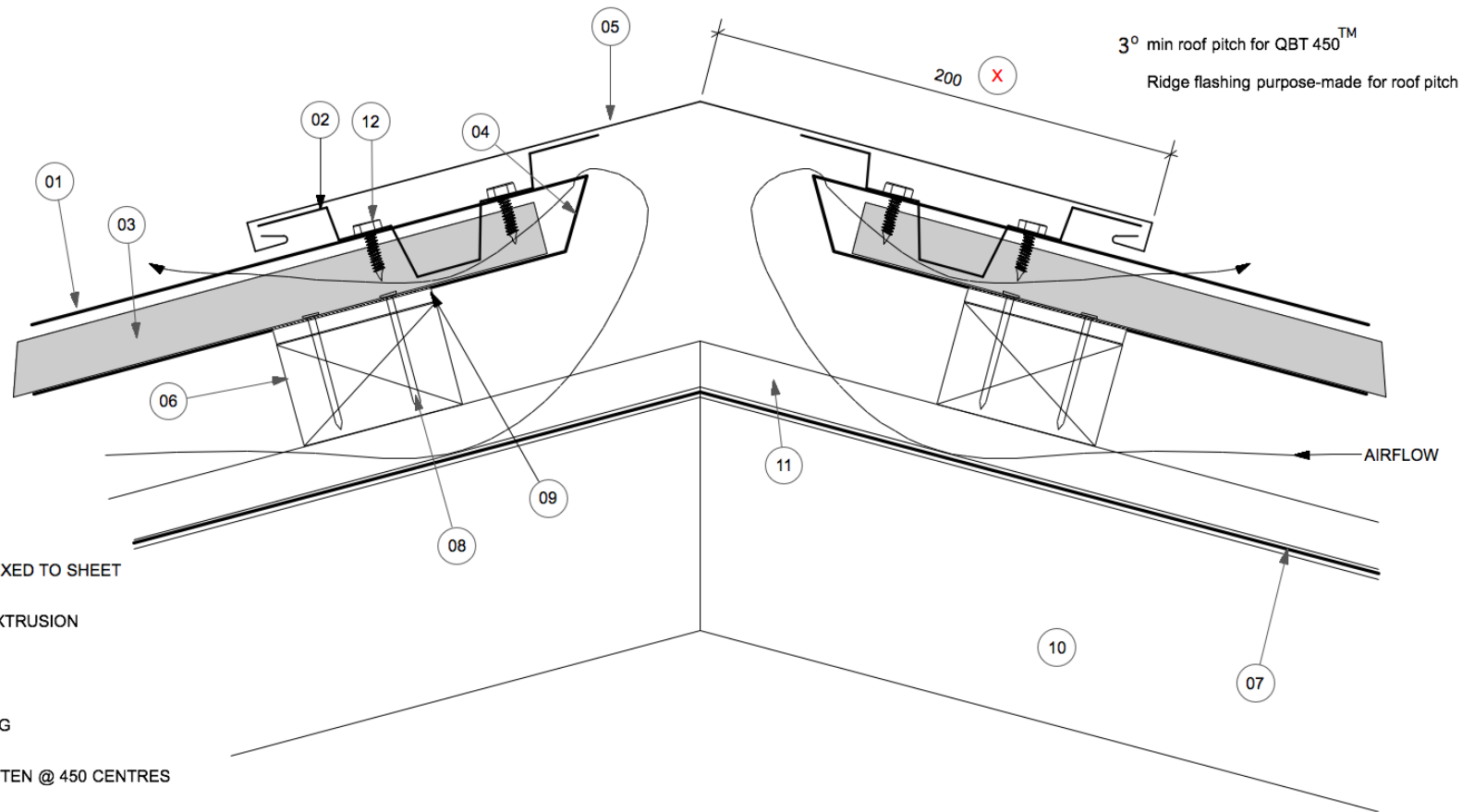
COPYRIGHT RESERVED NO REPRODUCTION OR COPY WITHOUT WRITTEN CONSENT FROM CONSTRUCTION CONNECTION AND CONSULTANCY LTD

Date: 20.05.2020

Scale: 1:2 on A3

REV: 01

A-03



- 01 QBT 450™ ROOF TRAY
- 02 RETAINER GRAB FLASHING, SCREW FIXED TO SHEET
- 03 QBT 450™ CONTINUOUS ALUMINIUM EXTRUSION
- 04 UPSTAND TO ROOFTRAY
- 05 PRE-MANUFACTURED RIDGE FLASHING
- 06 45 X 70 mm H3.2 TREATED TIMBER BATTEN @ 450 CENTRES
- 07 VAPOUR PERMABLE ROOF UNDERLAY
- 08 10-GAUGE STAINLESS STEEL PAN HEAD 50MM, OR 2.8 X 50 mm FLAT HEAD R-DRIVE GALV NAILS
- 09 AIR-Z 3-D WOVEN MESH
- 10 ROOF STRUCTURE
- 11 20 X 50 mm H3.2 TREATED CAVITY BATTEN
- 12 5.5 X 25 mm SELFDRILLING SCREW

X = please refer to E2/AS1 - Table 7 for cover widths recommended 200mm to suit Very High and Extra High wind zone



QBT 450™
THE INNOVATIVE ROOF SYSTEM



www.qbt450.nz

QUICK BATTEN TRAY SYSTEM - QBT 450™

RIDGE CAPPING DETAIL, INDIRECT FIXING OPTION, VENTILATED BUILD-UP

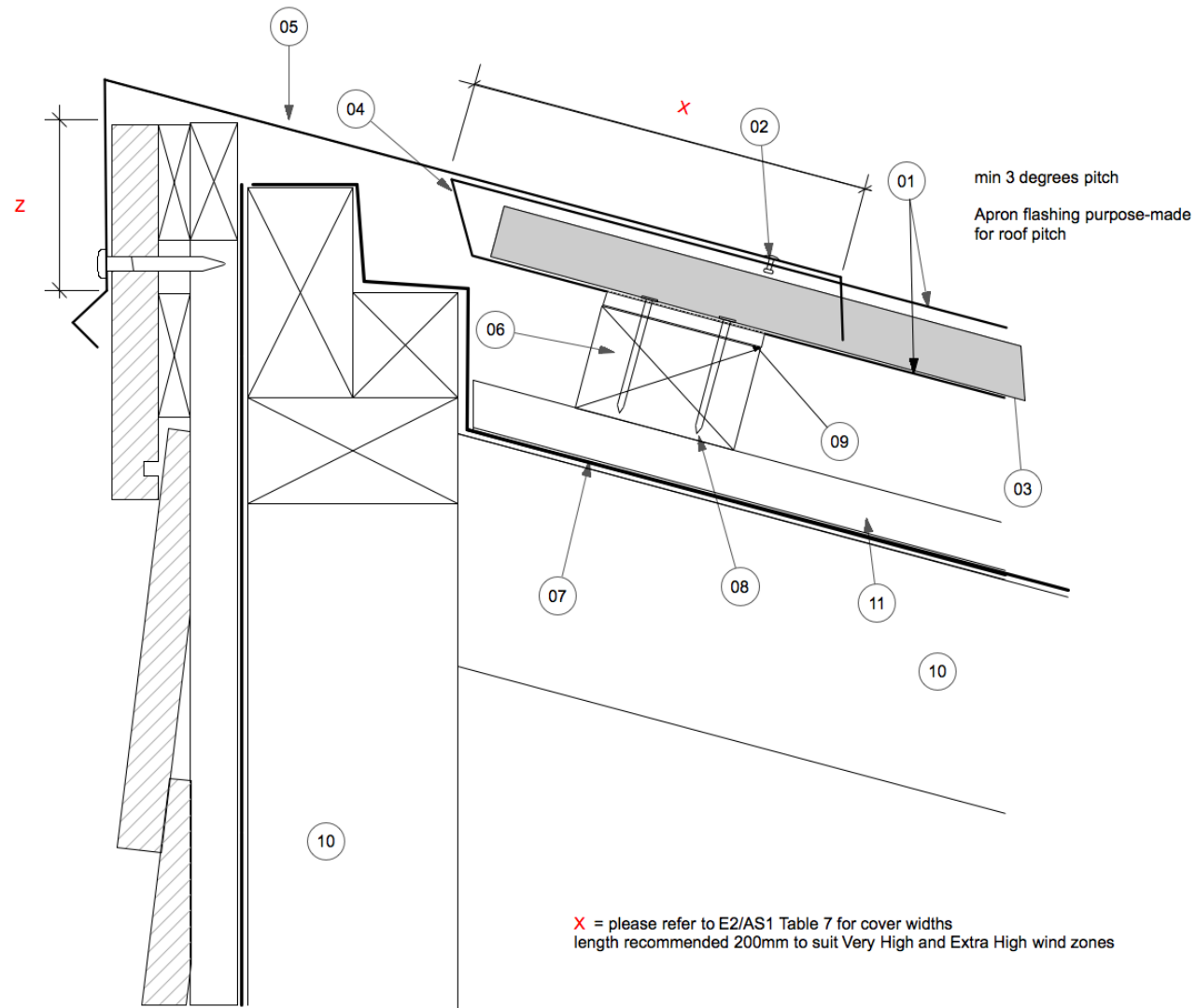
COPYRIGHT RESERVED NO REPRODUCTION OR COPY WITHOUT WRITTEN CONSENT FROM CONSTRUCTION CONNECTION AND CONSULTANCY LTD

Date: 20.05.2020

Scale: 1:2 on A3

REV: 01

A-04



- 01 QBT 450™ ROOF TRAY
- 02 SEALED RIVET
- 03 QBT 450™ CONTINUOUS ALUMINIUM EXTRUSION
- 04 UPSTAND TO ROOFTRAY
- 05 PRE-MANUFACTURED RIDGE FLASHING
- 06 45 X 70 mm H3.2 TREATED TIMBER BATTEN @ 450 CENTRES
- 07 VAPOUR PERMABLE ROOF UNDERLAY
- 08 10-GAUGE STAINLESS STEEL PAN HEAD 50MM, OR 2.8 X 50 mm FLAT HEAD R-DRIVE GALV NAILS
- 09 AIR-Z 3-D WOVEN MESH
- 10 ROOF STRUCTURE
- 11 20 X 50 mm H3.2 TREATED CAVITY BATTEN

X = please refer to E2/AS1 Table 7 for cover widths
length recommended 200mm to suit Very High and Extra High wind zones

Z = please refer to E2/AS1 Table 7 for cover widths
length recommended 90 mm to suit Extra High wind zone



QBT 450™
THE INNOVATIVE ROOF SYSTEM



www.qbt450.nz

QUICK BATTEN TRAY SYSTEM - QBT 450™

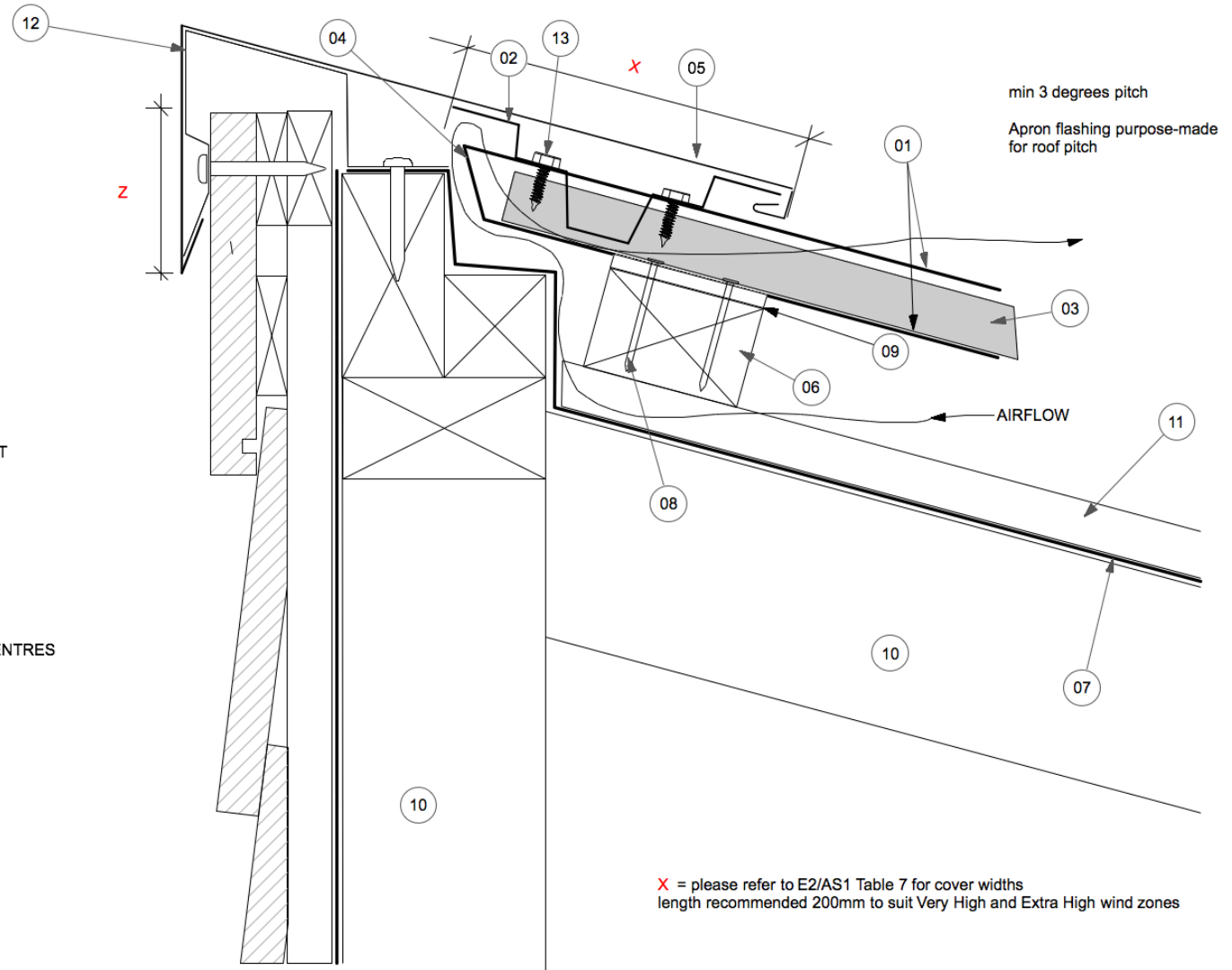
RIDGE CAPPING DETAIL, MONO PITCHED ROOF - DIRECT FIXING OPTION

COPYRIGHT RESERVED NO REPRODUCTION OR COPY WITHOUT WRITTEN CONSENT FROM CONSTRUCTION CONNECTION AND CONSULTANCY LTD

Date: 20.05.2020

Scale: 1:2 on A3

REV: 01 **A-05**



- 01 QBT 450™ ROOF TRAY
- 02 RETAINER GRAB FLASHING, SCREW FIXED TO SHEET
- 03 QBT 450™ CONTINUOUS ALUMINIUM EXTRUSION
- 04 UPSTAND TO ROOFTRAY
- 05 PRE-MANUFACTURED RIDGE FLASHING
- 06 45 X 70 mm H3.2 TREATED TIMBER BATTEN @ 450 CENTRES
- 07 VAPOUR PERMABLE ROOF UNDERLAY
- 08 10-GAUGE STAINLESS STEEL PAN HEAD 50MM, OR 2.8 X 50 mm FLAT HEAD R-DRIVE GALV NAILS
- 09 AIR-Z 3-D WOVEN MESH
- 10 ROOF STRUCTURE
- 11 20 X 50 mm H3.2 TREATED CAVITY BATTEN
- 12 GRAB FLASHING
- 13 5.5 X 25 mm SELFDRILLING SCREW

X = please refer to E2/AS1 Table 7 for cover widths
length recommended 200mm to suit Very High and Extra High wind zones

Z = please refer to E2/AS1 Table 7 for cover widths
length recommended 90 mm to suit Extra High wind zone



QBT 450™
THE INNOVATIVE ROOF SYSTEM



www.qbt450.nz

QUICK BATTEN TRAY SYSTEM - QBT 450™

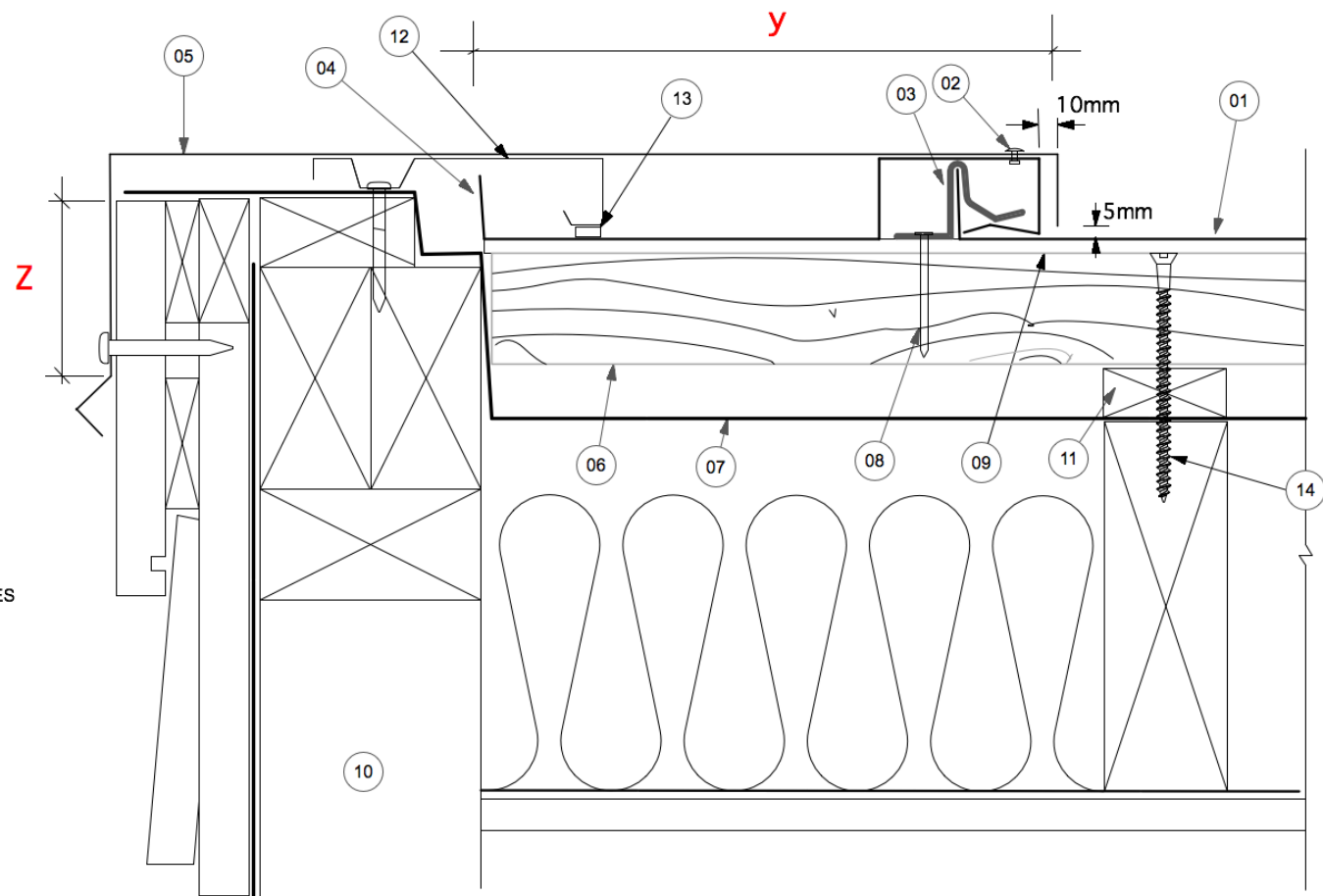
RIDGE CAPPING DETAIL, MONO PITCHED ROOF VENTED - INDIRECT FIXING OPTION

COPYRIGHT RESERVED NO REPRODUCTION OR COPY WITHOUT WRITTEN CONSENT FROM CONSTRUCTION CONNECTION AND CONSULTANCY LTD

Date: 20.05.2020

Scale: 1:2 on A3

REV: 01 **A-06**



- 01 QBT 450™ ROOF TRAY
- 02 SEALED RIVET
- 03 QBT 450™ CONTINUOUS ALUMINIUM EXTRUSION
- 04 UPSTAND TO ROOFTRAY
- 05 PRE-MANUFACTURED BARGE FLASHING
- 06 45 X 70 mm H3.2 TREATED TIMBER BATTEN @ 450 CENTRES
- 07 VAPOUR PERMABLE ROOF UNDERLAY
- 08 10-GAUGE STAINLESS STEEL PAN HEAD 50MM, OR 2.8 X 50 mm FLAT HEAD R-DRIVE GALV NAILS
- 09 AIR-Z 3-D WOVEN MESH
- 10 ROOF STRUCTURE
- 11 20 X 50 mm H3.2 TREATED CAVITY BATTEN
- 12 GRAB FLASHING
- 13 EXPANDABLE FOAM TAPE
- 14 10-GAUGE by 100mm PURLIN AND BATTEN SCREW

REFER TO SECTION 10, TABLE 10.12 NZS 3604:2011

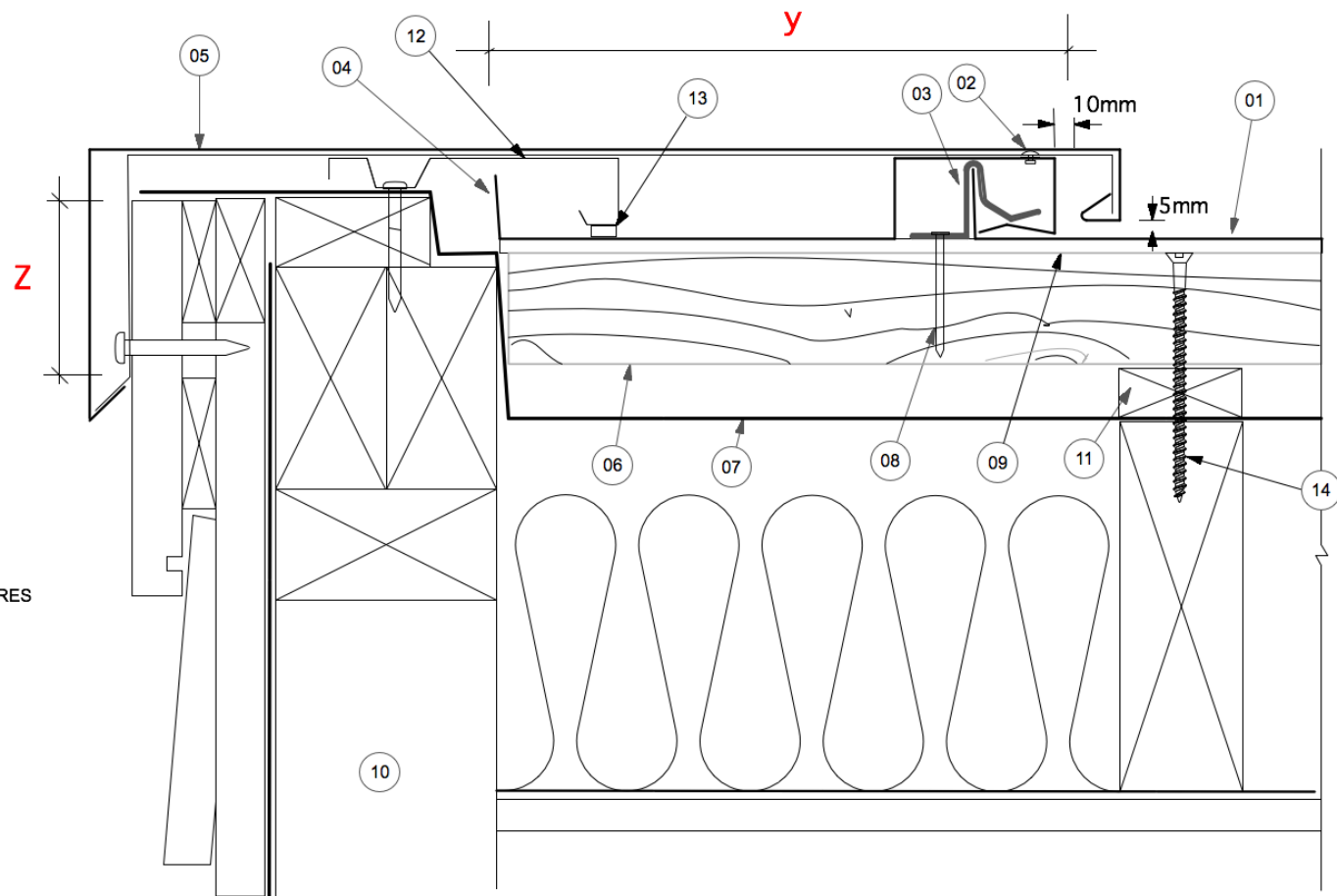
Y = please refer to E2/AS1 Table 7 for cover widths length recommended 200mm to suit Very High and Extra High wind zones

Z = please refer to E2/AS1 Table 7 for cover widths length recommended 90 mm to suit Extra High wind zone



www.qbt450.nz

QUICK BATTEN TRAY SYSTEM - QBT 450™	Date: 20.05.2020
BARGE DETAIL, DIRECT FIXED OPTION	Scale: 1:2 on A3
COPYRIGHT RESERVED NO REPRODUCTION OR COPY WITHOUT WRITTEN CONSENT FROM CONSTRUCTION CONNECTION AND CONSULTANCY LTD	REV: 01 A-07



- 01 QBT 450™ ROOF TRAY
- 02 SEALED RIVET
- 03 QBT 450™ CONTINUOUS ALUMINIUM EXTRUSION
- 04 UPSTAND TO ROOFTRAY
- 05 PRE-MANUFACTURED BARGE FLASHING
- 06 45 X 70 mm H3.2 TREATED TIMBER BATTEN @ 450 CENTRES
- 07 VAPOUR PERMABLE ROOF UNDERLAY
- 08 10-GAUGE STAINLESS STEEL PAN HEAD 50MM, OR 2.8 X 50 mm FLAT HEAD R-DRIVE GALV NAILS
- 09 AIR-Z 3-D WOVEN MESH
- 10 ROOF STRUCTURE
- 11 20 X 50 mm H3.2 TREATED CAVITY BATTEN
- 12 GRAB FLASHING
- 13 EXPANDABLE FOAM TAPE
- 14 10-GAUGE by 100mm PURLIN AND BATTEN SCREW

REFER TO SECTION 10, TABLE 10.12 NZS 3604:2011

y = please refer to E2/AS1 Table 7 for cover widths
length recommended 200mm to suit Very High and Extra High wind zones

Z = please refer to E2/AS1 Table 7 for cover widths
length recommended 90 mm to suit Extra High wind zone



QBT 450™
THE INNOVATIVE ROOF SYSTEM



www.qbt450.nz

QUICK BATTEN TRAY SYSTEM - QBT 450™

BARGE DETAIL, INDIRECT FIXED OPTION

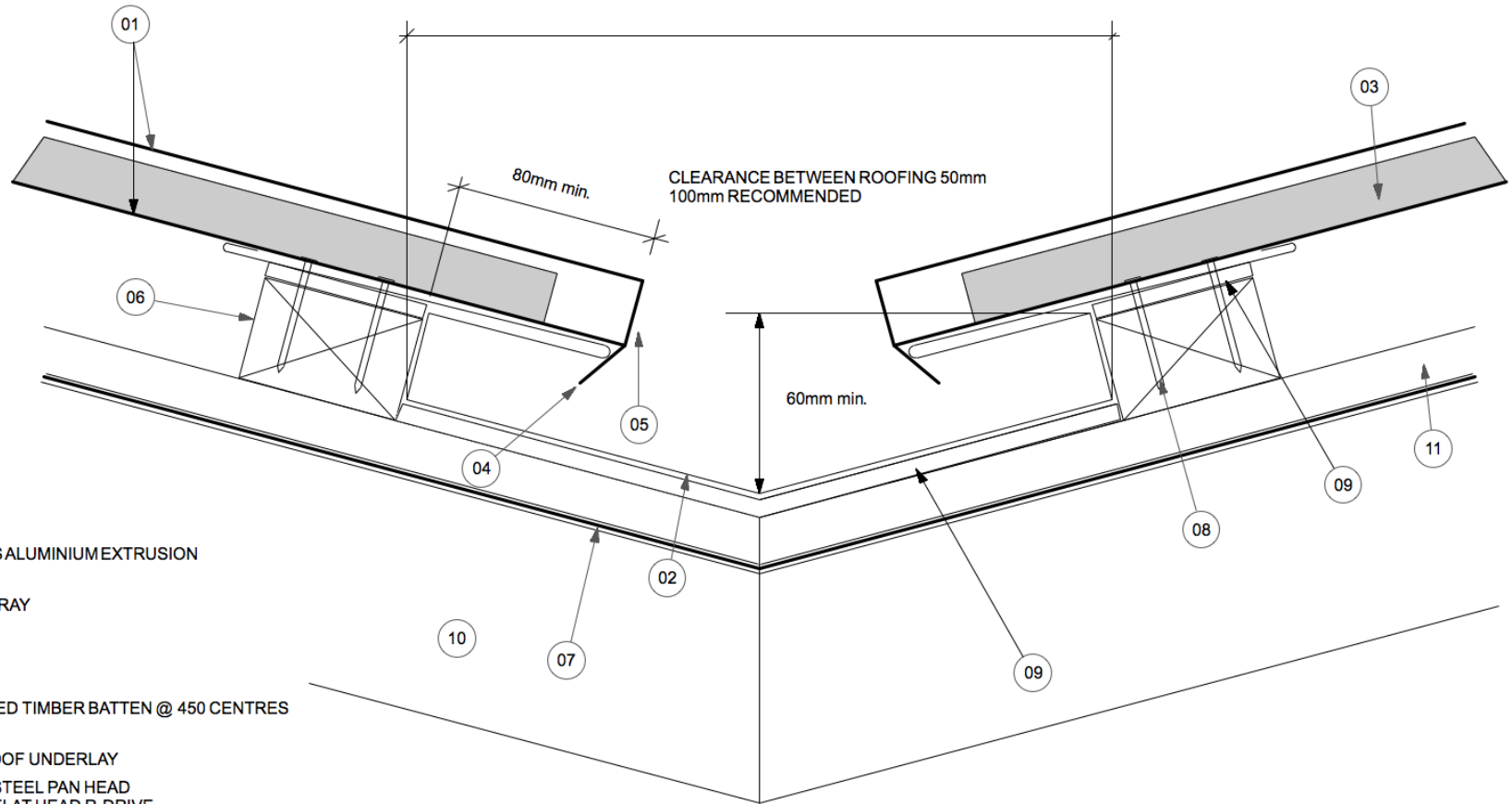
COPYRIGHT RESERVED NO REPRODUCTION OR COPY WITHOUT WRITTEN CONSENT FROM CONSTRUCTION CONNECTION AND CONSULTANCY LTD

Date: 20.05.2020

Scale: 1:2 on A3

REV: 01 **A-08**

OVERALL GUTTER WIDTH 250mm



- 01 QBT 450™ ROOF TRAY
- 02 INTERNAL GUTTER
- 03 QBT 450™ CONTINUOUS ALUMINIUM EXTRUSION
- 04 DOWNTURN TO ROOF TRAY
- 05 STOP END
- 06 45 X 70 mm H3.2 TREATED TIMBER BATTEN @ 450 CENTRES
- 07 VAPOUR PERMABLE ROOF UNDERLAY
- 08 10-GAUGE STAINLESS STEEL PAN HEAD 50MM, OR 2.8 X 50 mm FLAT HEAD R-DRIVE GALV NAILS
- 09 AIR-Z 3-D WOVEN MESH
- 10 ROOF STRUCTURE
- 11 20 X 50 mm H3.2 TREATED CAVITY BATTEN



QBT 450™
THE INNOVATIVE ROOF SYSTEM



www.qbt450.nz

QUICK BATTEN TRAY SYSTEM - QBT 450™

INTERNAL VALLEY GUTTER DETAIL

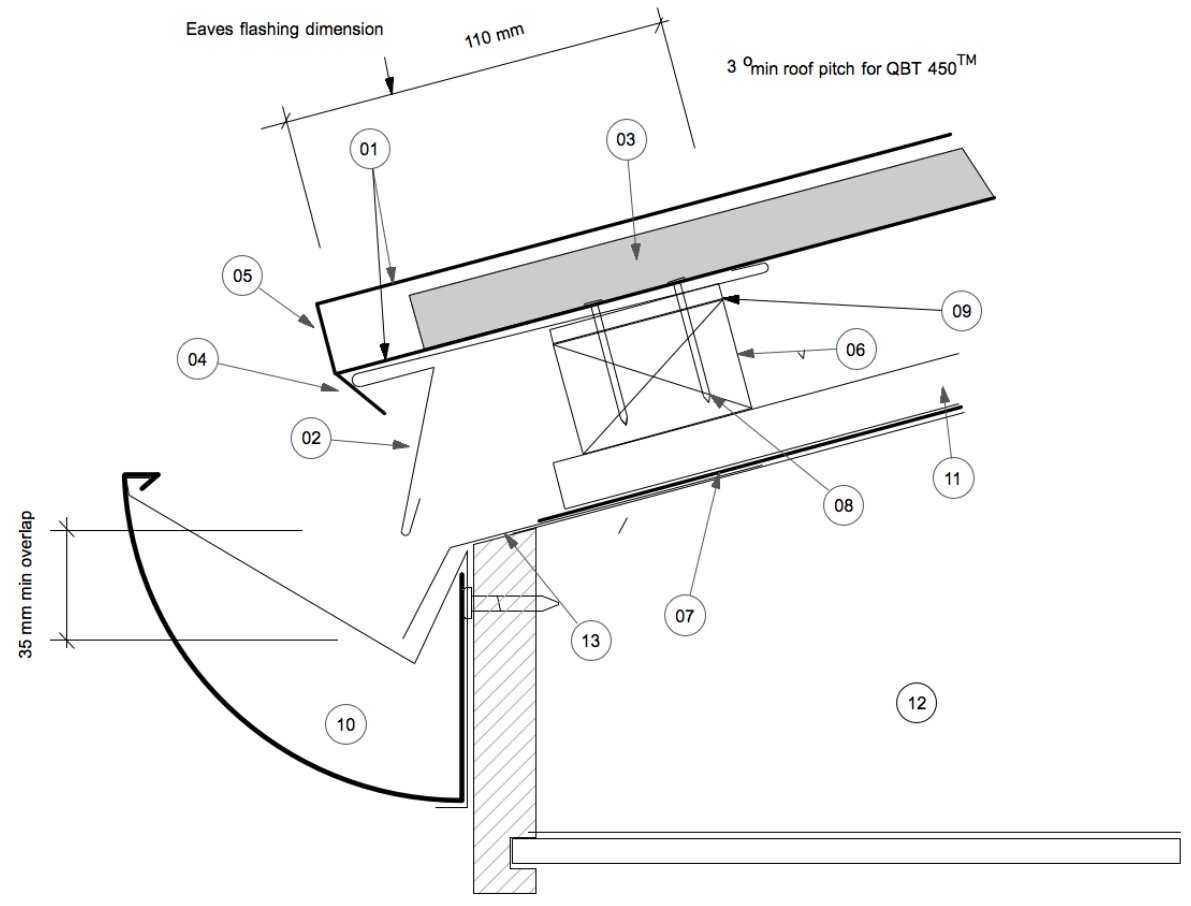
COPYRIGHT RESERVED NO REPRODUCTION OR COPY WITHOUT WRITTEN CONSENT FROM CONSTRUCTION CONNECTION AND CONSULTANCY LTD

Date: 20.05.2020

Scale: 1:2 on A3

REV: 01 **A-09**

Eaves flashing dimension 110 mm
 3° min roof pitch for QBT 450™



- 01 QBT 450™ ROOF TRAY
- 02 PRE-MANUFACTURED UNDER FLASHING
- 03 QBT 450™ CONTINUOUS ALUMINIUM EXTRUSION
- 04 DOWNTURN TO ROOFTRAY
- 05 END CAP
- 06 45 X 70 mm H3.2 TREATED TIMBER BATTEN @ 450 CENTRES
- 07 VAPOUR PERMEABLE ROOF UNDERLAY
- 08 10-GAUGE STAINLESS STEEL PAN HEAD 50MM, OR 2.8 X 50 mm FLAT HEAD R-DRIVE GALV NAILS
- 09 AIR-Z 3-D WOVEN MESH
- 10 PRE-MANUFACTURED QUARTER-ROUND GUTTER
- 11 20 X 50 mm H3.2 TREATED CAVITY BATTEN
- 12 ROOF STRUCTURE

13 Note: Eaves flashing in accordance with E2/AS1 Figure 45A, required when all of the following conditions are met
 - Roof slope is less than 10 degrees
 - Soffit width is less than or equal to 100mm, and
 - Wind Zones are Very High or Extra High

In cases the eaves flashing is not required, the building paper (07) would need to extend into the gutter.

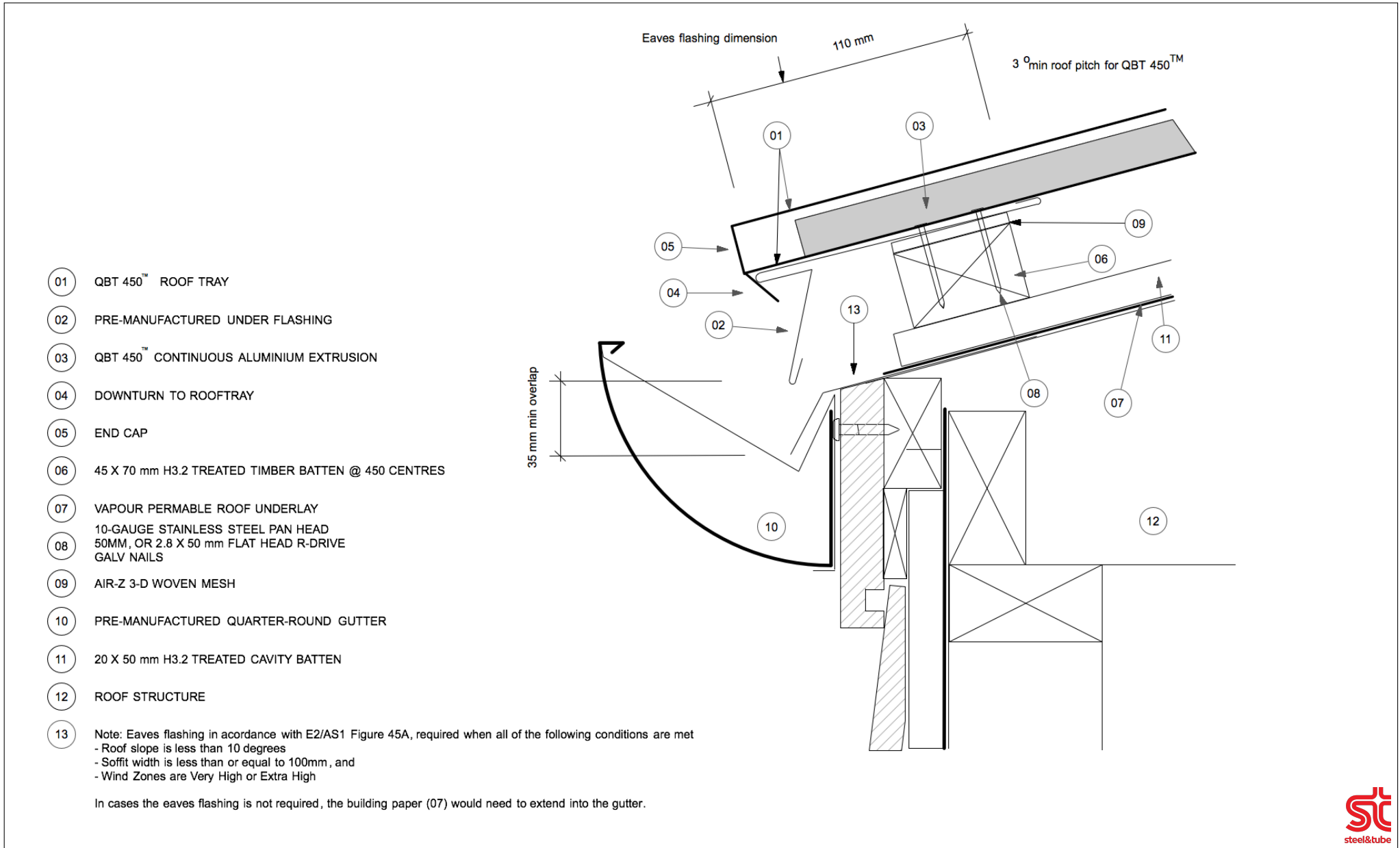


QBT 450™
 THE INNOVATIVE ROOF SYSTEM



www.qbt450.nz

QUICK BATTEN TRAY SYSTEM - QBT 450™	Date: 20.05.2020
EAVE TERMINATION DETAIL WITH QUARTER ROUND GUTTER ROOF - SOFFIT JUNCTION	Scale: 1:2 on A3
COPYRIGHT RESERVED NO REPRODUCTION OR COPY WITHOUT WRITTEN CONSENT FROM CONSTRUCTION CONNECTION AND CONSULTANCY LTD	REV: 01



- 01 QBT 450™ ROOF TRAY
- 02 PRE-MANUFACTURED UNDER FLASHING
- 03 QBT 450™ CONTINUOUS ALUMINIUM EXTRUSION
- 04 DOWNTURN TO ROOFTRAY
- 05 END CAP
- 06 45 X 70 mm H3.2 TREATED TIMBER BATTEN @ 450 CENTRES
- 07 VAPOUR PERMABLE ROOF UNDERLAY
- 08 10-GAUGE STAINLESS STEEL PAN HEAD 50MM, OR 2.8 X 50 mm FLAT HEAD R-DRIVE GALV NAILS
- 09 AIR-Z 3-D WOVEN MESH
- 10 PRE-MANUFACTURED QUARTER-ROUND GUTTER
- 11 20 X 50 mm H3.2 TREATED CAVITY BATTEN
- 12 ROOF STRUCTURE

13 Note: Eaves flashing in accordance with E2/AS1 Figure 45A, required when all of the following conditions are met

- Roof slope is less than 10 degrees
- Soffit width is less than or equal to 100mm, and
- Wind Zones are Very High or Extra High

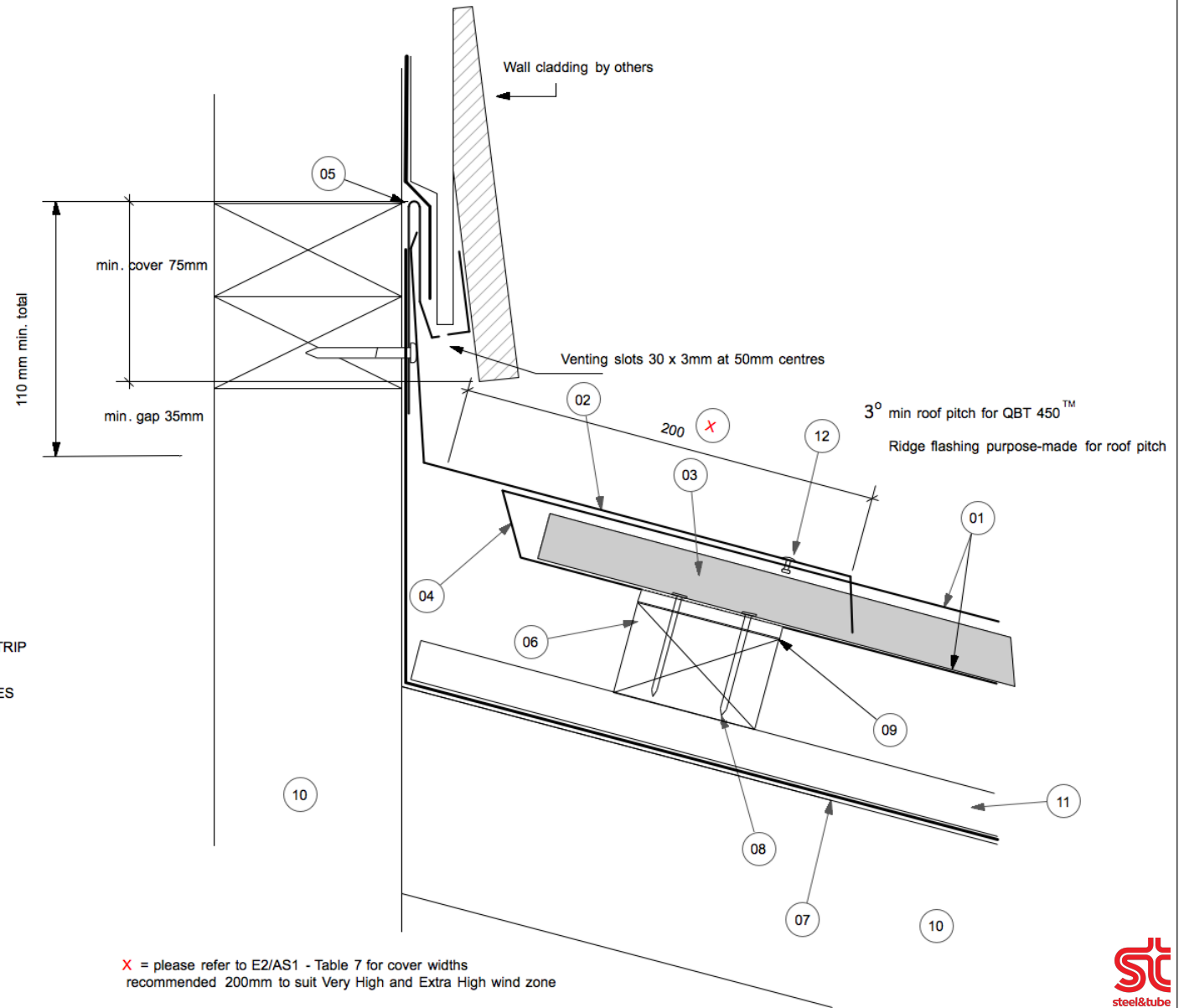
In cases the eaves flashing is not required, the building paper (07) would need to extend into the gutter.



www.qbt450.nz

QUICK BATTEN TRAY SYSTEM - QBT 450™	Date: 20.05.2020
EAVE TERMINATION DETAIL WITH QUARTER ROUND GUTTER ROOF - WALL JUNCTION	Scale: 1:2 on A3
COPYRIGHT RESERVED NO REPRODUCTION OR COPY WITHOUT WRITTEN CONSENT FROM CONSTRUCTION CONNECTION AND CONSULTANCY LTD	

REV: 01 A-11



www.qbt450.nz

QUICK BATTEN TRAY SYSTEM - QBT 450™

APRON DETAIL - ROOF/ WALL JUNCTION DIRECT FIXING OPTION

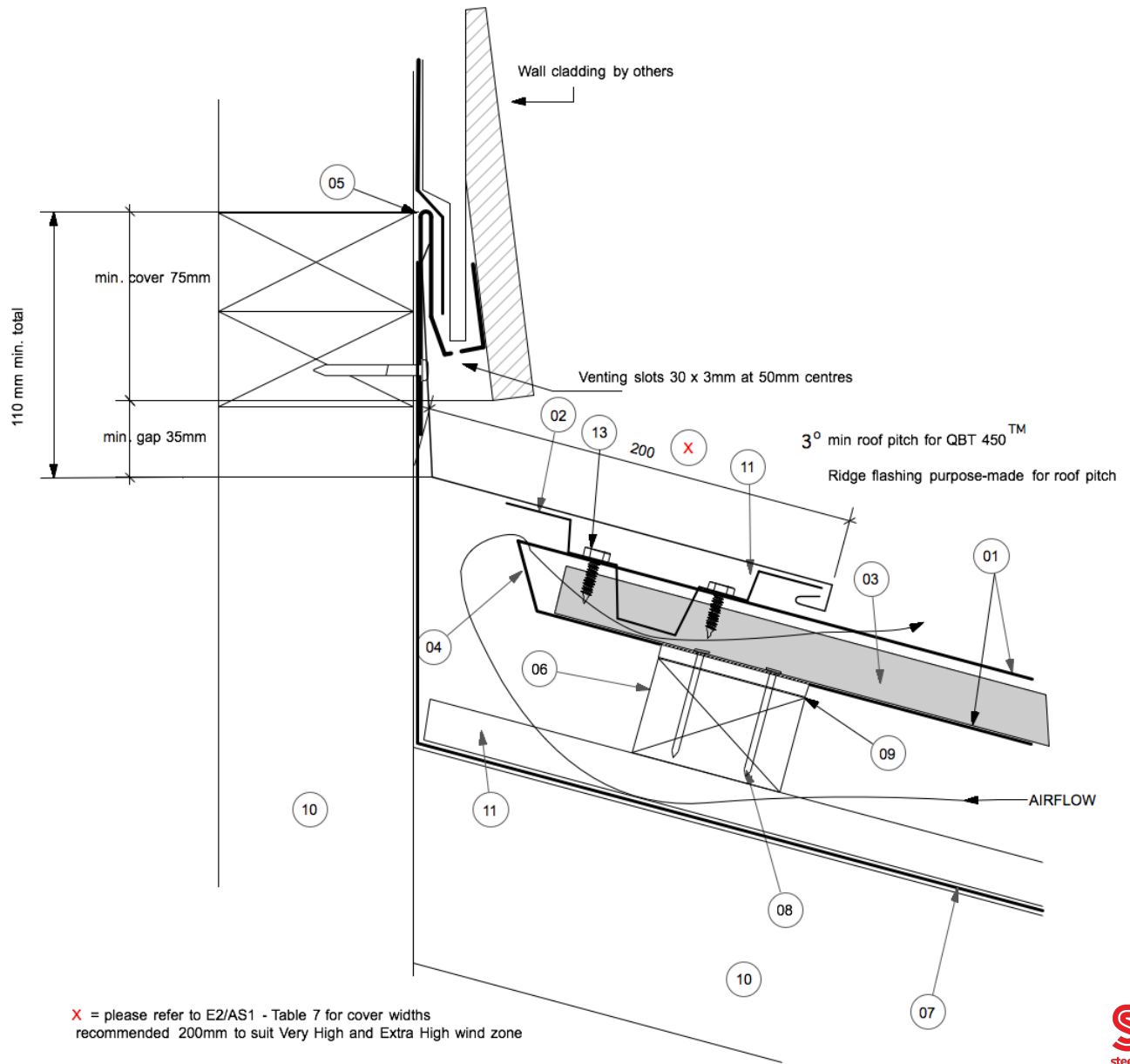
COPYRIGHT RESERVED NO REPRODUCTION OR COPY WITHOUT WRITTEN CONSENT FROM CONSTRUCTION CONNECTION AND CONSULTANCY LTD

Date: 20.05.2020

Scale: 1:2 on A3

REV: 01 A-12

- 01 QBT 450™ ROOF TRAY
- 02 PRE-MANUFACTURED APRON FLASHING
- 03 QBT 450™ CONTINUOUS ALUMINIUM EXTRUSION
- 04 UPSTAND TO ROOFTRAY
- 05 PRE-MANUFACTURED RECEIVER FLASHING AND VENT STRIP
- 06 45 X 70 mm H3.2 TREATED TIMBER BATTEN @ 450 CENTRES
- 07 VAPOUR PERMEABLE ROOF UNDERLAY
- 08 10-GAUGE STAINLESS STEEL PAN HEAD 50MM, OR 2.8 X 50 mm FLAT HEAD R-DRIVE GALV NAILS
- 09 AIR-Z 3-D WOVEN MESH
- 10 ROOF STRUCTURE
- 11 20 X 50 mm H3.2 TREATED CAVITY BATTEN
- 12 RETAINER GRAB FLASHING , SCREW FIXED TO SHEET
- 13 5.5 X 25 mm SELFDRILLING SCREW



X = please refer to E2/AS1 - Table 7 for cover widths recommended 200mm to suit Very High and Extra High wind zone



QBT 450™
THE INNOVATIVE ROOF SYSTEM



www.qbt450.nz

QUICK BATTEN TRAY SYSTEM - QBT 450™

APRON DETAIL - ROOF/ WALL JUNCTION, INDIRECT FIXING OPTION

COPYRIGHT RESERVED NO REPRODUCTION OR COPY WITHOUT WRITTEN CONSENT FROM CONSTRUCTION CONNECTION AND CONSULTANCY LTD

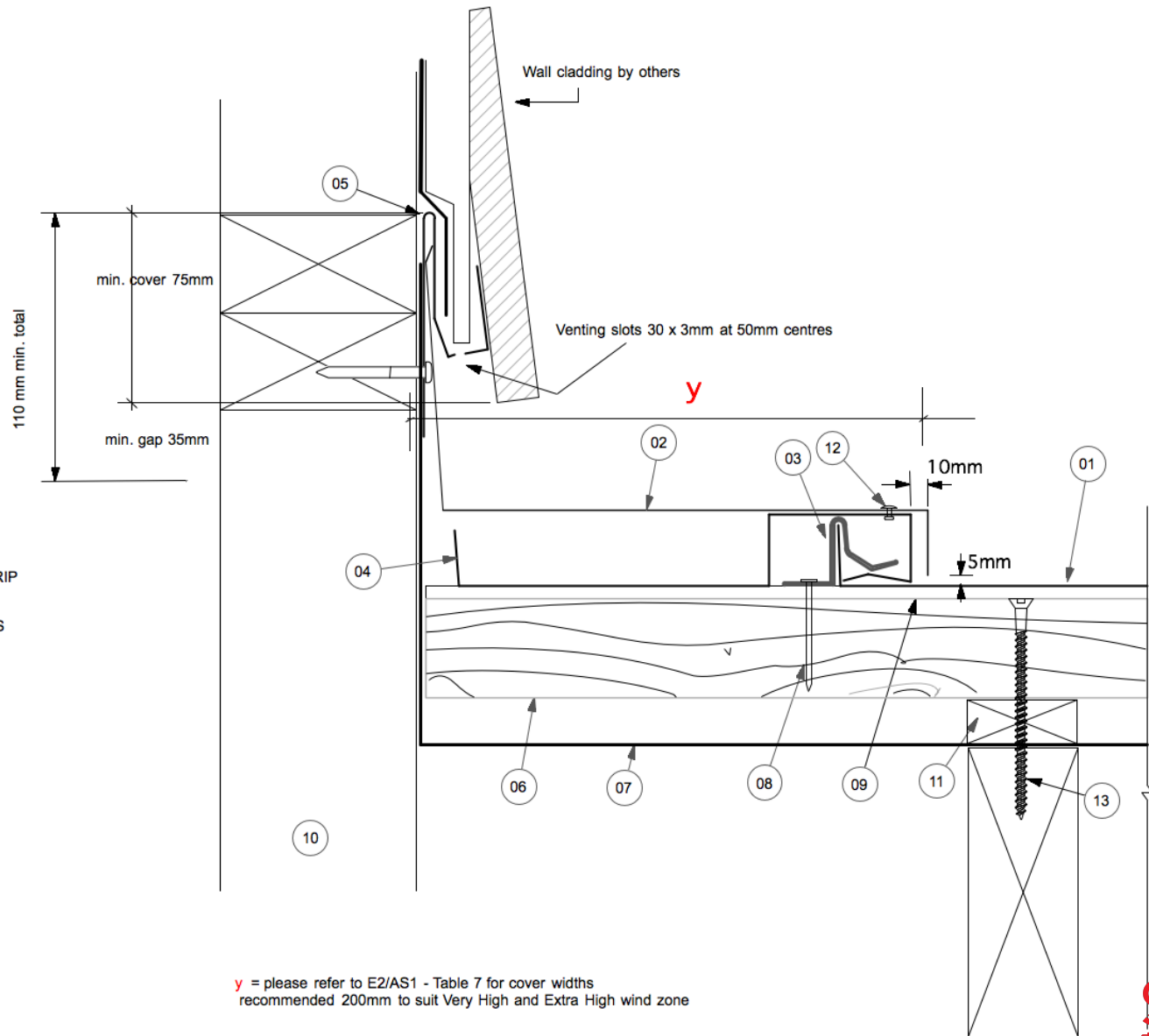
Date: 20.05.2020

Scale: 1:2 on A3

REV: 01 **A-13**

- 01 QBT 450™ ROOF TRAY
- 02 PRE-MANUFACTURED APRON FLASHING
- 03 QBT 450™ CONTINUOUS ALUMINIUM EXTRUSION
- 04 UPSTAND TO ROOFTRAY
- 05 PRE-MANUFACTURED RECEIVER FLASHING AND VENT STRIP
- 06 45 X 70 mm H3.2 TREATED TIMBER BATTEN @ 450 CENTRES
- 07 VAPOUR PERMABLE ROOF UNDERLAY
- 08 10-GAUGE STAINLESS STEEL PAN HEAD 50MM, OR 2.8 X 50 mm FLAT HEAD R-DRIVE GALV NAILS
- 09 AIR-Z 3-D WOVEN MESH
- 10 ROOF STRUCTURE
- 11 20 X 50 mm H3.2 TREATED CAVITY BATTEN
- 12 SEALED RIVET
- 13 10-GAUGE by 100mm PURLIN AND BATTEN SCREW

REFER TO SECTION 10, TABLE 10.12 NZS 3604:2011



y = please refer to E2/AS1 - Table 7 for cover widths
recommended 200mm to suit Very High and Extra High wind zone



QBT 450™
THE INNOVATIVE ROOF SYSTEM



www.qbt450.nz

QUICK BATTEN TRAY SYSTEM - QBT 450™

APRON ROOF/WALL JUNCTION, WITH DIRECT FIXING OPTION

COPYRIGHT RESERVED NO REPRODUCTION OR COPY WITHOUT WRITTEN CONSENT FROM CONSTRUCTION CONNECTION AND CONSULTANCY LTD

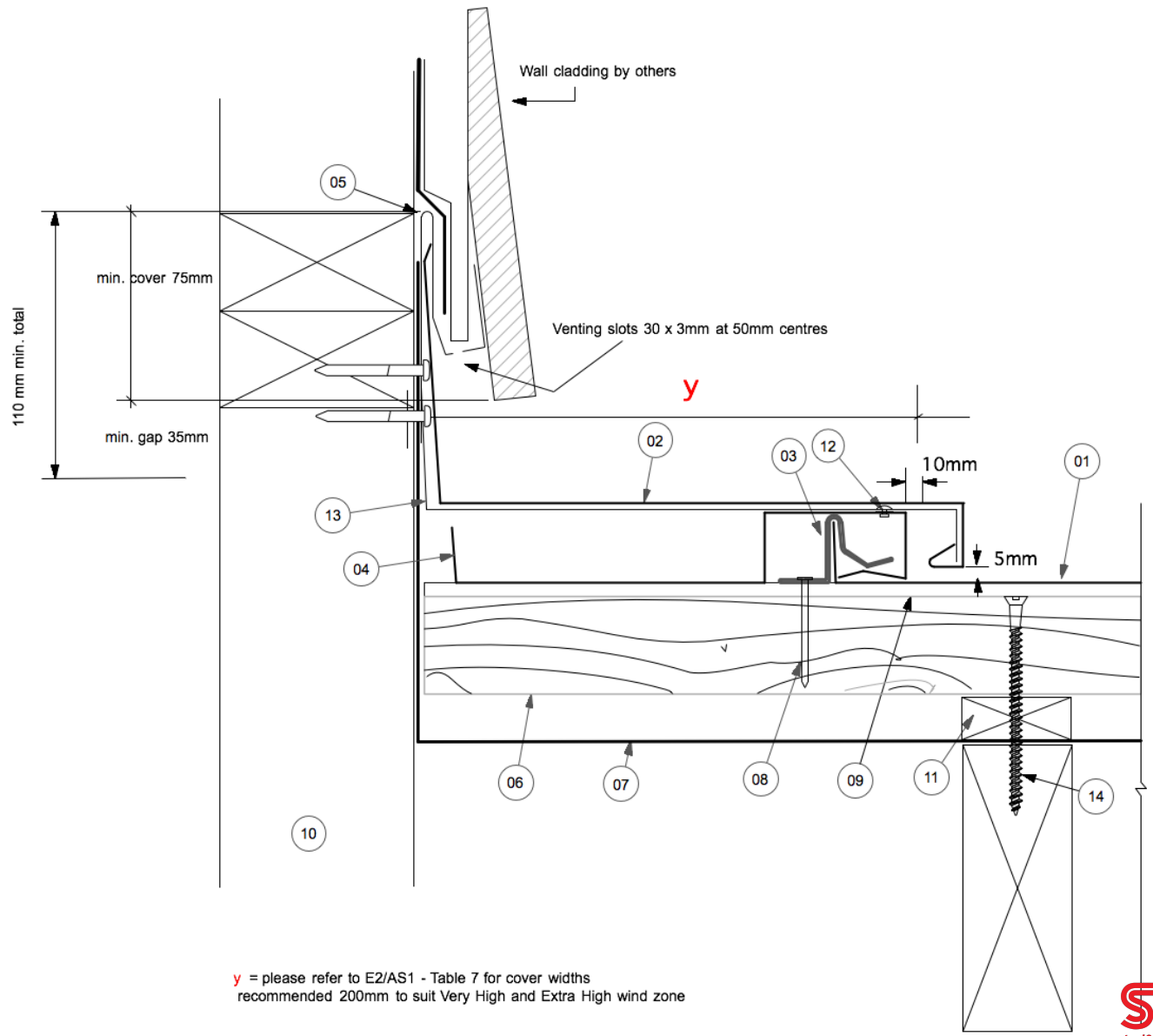
Date: 20.05.2020

Scale: 1:2 on A3

REV: 01

A-14

- 01 QBT 450™ ROOF TRAY
 - 02 PRE-MANUFACTURED APRON FLASHING
 - 03 QBT 450™ CONTINUOUS ALUMINIUM EXTRUSION
 - 04 UPSTAND TO ROOFTRAY
 - 05 PRE-MANUFACTURED RECEIVER FLASHING AND VENT STRIP
 - 06 45 X 70 mm H3.2 TREATED TIMBER BATTEN @ 450 CENTRES
 - 07 VAPOUR PERMABLE ROOF UNDERLAY
 - 08 10-GAUGE STAINLESS STEEL PAN HEAD 50MM, OR 2.8 X 50 mm FLAT HEAD R-DRIVE GALV NAILS
 - 09 AIR-Z 3-D WOVEN MESH
 - 10 ROOF STRUCTURE
 - 11 20 X 50 mm H3.2 TREATED CAVITY BATTEN
 - 12 SEALED RIVET
 - 13 GRAB FLASHING
 - 14 10-GAUGE by 100mm PURLIN AND BATTEN SCREW
- REFER TO SECTION 10, TABLE 10.12 NZS 3604:2011



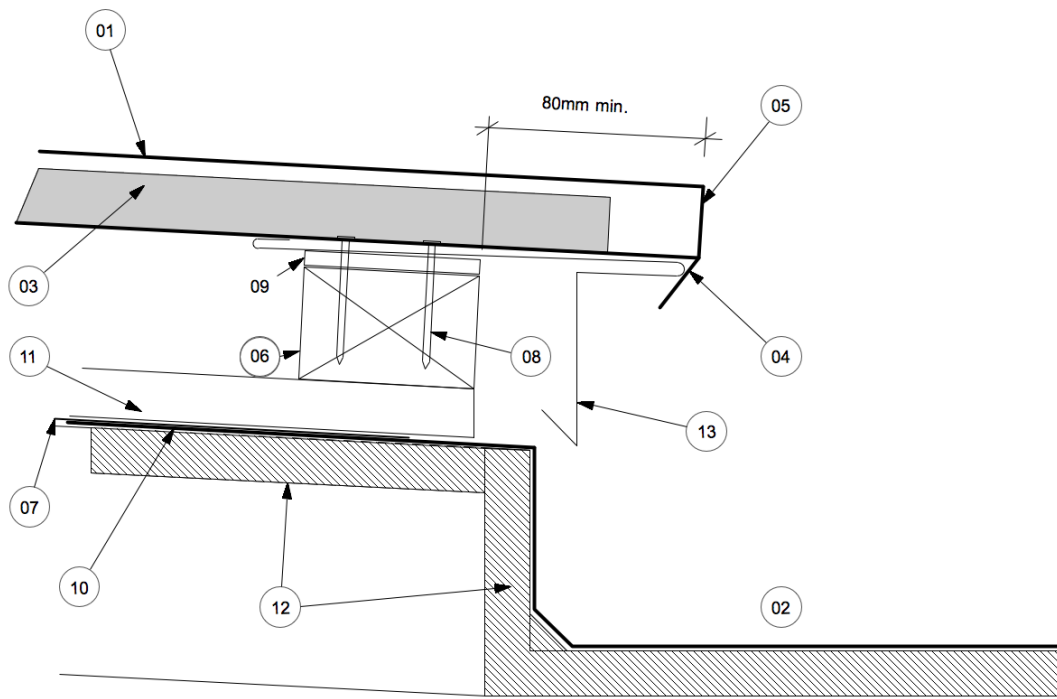
y = please refer to E2/AS1 - Table 7 for cover widths
recommended 200mm to suit Very High and Extra High wind zone



www.qbt450.nz

QUICK BATTEN TRAY SYSTEM - QBT 450™	Date: 20.05.2020
APRON ROOF/WALL JUNCTION, WITH INDIRECT FIXING OPTION	Scale: 1:2 on A3
COPYRIGHT RESERVED NO REPRODUCTION OR COPY WITHOUT WRITTEN CONSENT FROM CONSTRUCTION CONNECTION AND CONSULTANCY LTD	REV: 01 A-15

- 01 QBT 450™ ROOF TRAY
- 02 INTERNAL GUTTER
- 03 QBT 450™ CONTINUOUS ALUMINIUM EXTRUSION
- 04 DOWNTURN TO ROOFTRAY
- 05 STOPEND
- 06 45 X 70 mm H3.2 TREATED TIMBER BATTEN @ 450 CENTRES
- 07 VAPOUR PERMABLE ROOF UNDERLAY
- 08 10-GAUGE STAINLESS STEEL PAN HEAD 50MM, OR 2.8 X 50 mm FLAT HEAD R-DRIVE GALV NAILS
- 09 AIR-Z 3-D WOVEN MESH
- 10 MEMBRANE TO INTERNAL GUTTER
- 11 20 X 50 mm H3.2 TREATED CAVITY BATTEN
- 12 18 mm PLYWOOD
- 13 STARTER FLASHING



www.qbt450.nz

QUICK BATTEN TRAY SYSTEM - QBT 450™	Date: 20.05.2020
INTERNAL GUTTER DETAIL	Scale: 1:2 on A3
COPYRIGHT RESERVED NO REPRODUCTION OR COPY WITHOUT WRITTEN CONSENT FROM CONSTRUCTION CONNECTION AND CONSULTANCY LTD	REV: 01 A-16