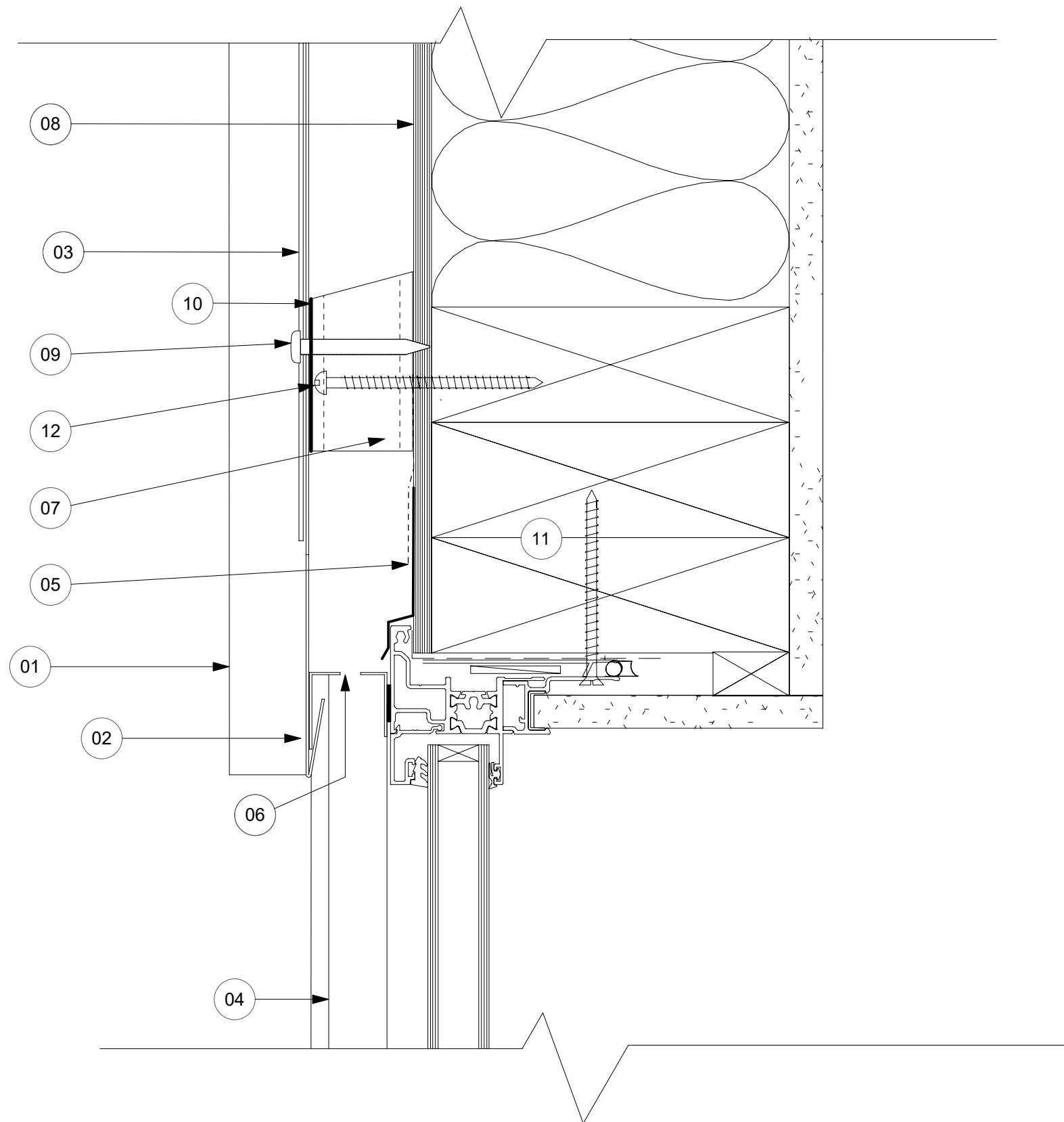


- 01 QBT 450™ TRAY
- 02 TERMINATION TO QBT 450 TRAY
- 03 QBT 450™ CONTINUOUS ALUMINIUM EXTRUSION
- 04 WINDOW JAMB FLASHING
- 05 WINDOW HEAD FLASHING WITH FLASHING TAPE TO RAB BOARD
- 06 CAVITY CLOSURE FLASHING WITH 5MM HOLES @ 25mm CETRES
- 07 45 X 70 mm H3.2 TREATED CASTELLATED TIMBER BATTEN @ 450 CENTRES
- 08 RAB BOARD
- 09 10-GAUGE STAINLESS STEEL PAN HEAD 50MM, OR 2.8 X 50 mm FLAT HEAD R-DRIVE GALV NAILS
- 10 SEPARATION LAYER
- 11 STRUCTURE
- 12 10-GAUGE by 100mm PURLIN AND BATTEN SCREW

REFER TO SECTION 10, TABLE 10.12 NZS 3604:2011



QBT 450™
THE INNOVATIVE ROOF SYSTEM



www.qbt450.nz

QUICK BATTEN TRAY SYSTEM - QBT 450™

WALL CLADDING, TYPICAL WINDOW HEAD DETAIL

COPYRIGHT RESERVED NO REPRODUCTION OR COPY WITHOUT WRITTEN CONSENT FROM CONSTRUCTION CONNECTION AND CONSULTANCY LTD

Date: 01.06.2020

Scale: 1:2 on A3

REV: 01 **A-W02**

